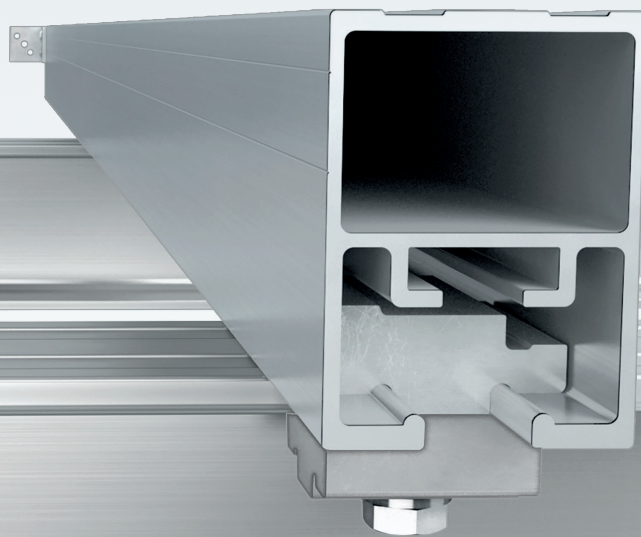


Transport technology / Bodywork systems / Construction profiles and accessories

# Construction profiles and accessories

Construction profiles and accessories



# Table of Contents

Chapter	Product category		Page
Construction profiles and accessories	Construction profiles	U-shaped structural steel	21.01.01.01
		Subframe clamp	21.01.01.02
		GETO® Frame Alu	21.01.01.03
		Cross-members	21.01.02.01
		Subframe brackets	21.01.02.02
		Springs and washers	21.01.02.04
		Shock absorber units elastic blue	21.01.02.05
		Subframe brackets for Sprinter-class vehicles	21.01.02.06
		TALS side rave profile	21.01.03.01
		Floor rave profiles	21.01.03.05
		Pillar profiles	21.01.03.14
		Bulkhead profiles	21.01.03.15
		Tipper profiles	21.01.03.16
		Dropside channel iron, kick strips	21.01.04.01
		Special profiles	21.01.04.02
		Accessories	Carriage combinations

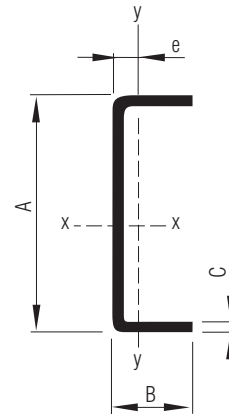
# Product Index

## Numeric

Article No.	Pg.	Article No.	Pg.	Article No.	Pg.
217 046 350	21.01.03.8	218 508 000	21.01.03.15	218 693 000	21.01.02.5
217 051 500	21.01.01.3	218 518 750	21.01.03.9	218 696 000	21.01.02.4
217 051 501	21.01.01.3	218 519 750	21.01.03.9	218 697 000	21.01.02.4
217 098 006	21.01.01.4	218 525 750	21.01.03.5	218 975 056	21.01.03.9
217 098 008	21.01.01.6	218 528 750	21.01.03.5	218 975 144	21.01.03.10
217 098 009	21.01.01.5	218 530 000	21.01.03.6	224 037 748	21.01.01.3
218 030 000	21.01.01.1	218 533 000	21.01.03.7	224 037 750	21.01.01.3
218 034 000	21.01.01.1	218 539 000	21.01.04.2	232 954 000	21.02.01.1
218 048 760	21.01.01.1	218 540 000	21.01.04.2	232 955 000	21.02.01.1
218 048 999	21.01.01.1	218 543 000	21.01.04.2	232 956 000	21.02.01.2
218 050 000	21.01.01.1	218 548 000	21.02.01.1	233 358 000	21.01.04.2
218 056 760	21.01.01.1	218 550 000	21.01.03.15	501 340 000	21.02.01.1
218 058 000	21.01.01.1	218 558 000	21.01.03.11	616 650 000	21.01.03.4
218 066 000	21.01.01.1	218 570 000	21.01.03.11	616 652 000	21.01.03.4
218 070 000	21.01.01.1	218 581 000	21.01.03.11	616 659 000	21.01.03.4
218 073 000	21.01.01.1	218 590 750	21.01.03.3	631 915 000	21.02.01.2
218 223 000	21.01.01.1	218 591 000	21.01.03.3		
218 226 000	21.01.01.1	218 595 000	21.01.03.3		
218 229 000	21.01.01.1	218 628 000	21.01.02.1		
218 229 760	21.01.01.1	218 629 000	21.01.02.1		
218 232 000	21.01.01.1	218 668 000	21.01.01.2		
218 238 000	21.01.01.1	218 671 000	21.01.01.2		
218 240 000	21.01.01.1	218 673 000	21.01.01.2		
218 313 000	21.01.04.1	218 675 000	21.01.02.3		
218 315 000	21.01.04.1	218 676 000	21.01.02.3		
218 322 000	21.01.04.1	218 680 000	21.01.02.2		
218 379 000	21.01.03.16	218 680 000	21.01.03.5		
218 392 000	21.01.03.16	218 681 000	21.01.02.2		
218 443 630	21.01.03.13	218 681 000	21.01.03.5		
218 445 630	21.01.03.13	218 682 000	21.01.02.2		
218 452 630	21.01.03.13	218 683 000	21.01.02.6		
218 453 630	21.01.03.13	218 683 001	21.01.02.6		
218 461 730	21.01.03.13	218 683 002	21.01.02.6		
218 465 730	21.01.03.13	218 683 004	21.01.02.8		
218 467 730	21.01.03.13	218 683 005	21.01.02.8		
218 470 000	21.01.03.15	218 683 006	21.01.02.7		
218 472 000	21.01.03.15	218 683 007	21.01.02.7		
218 477 600	21.01.03.15	218 683 008	21.01.02.7		
218 478 000	21.01.03.15	218 683 009	21.01.02.9		
218 481 600	21.01.03.15	218 684 000	21.01.02.4		
218 489 000	21.01.03.15	218 686 000	21.01.02.4		
218 506 000	21.01.03.15	218 688 000	21.01.02.4		
218 507 000	21.01.03.15	218 689 000	21.01.02.4		

# U-shaped structural steel

## U-shaped structural steel



A	B	C	Length	Area	e	Jx	Wx	ix	Jy	Wy	iy	Weight approx.	Article No.	
[mm]	[mm]	[mm]	[mm]	[cm <sup>2</sup> ]	[mm]	[cm <sup>4</sup> ]	[cm <sup>3</sup> ]	[cm]	[cm <sup>4</sup> ]	[cm <sup>3</sup> ]	[cm]	[kg/m]	Untreated	Sand-blasted and primed <sup>1</sup>
<b>Material: S 235 JR</b>														
46	45	3	6000	-	16.70	13.28	5.82	1.88	7.82	2.80	3.00	3.00	218 030 000	-
50	40	4	6000	4.68	14.60	17.79	7.12	1.97	7.38	2.91	3.67	3.67	218 034 000	-
80		4	7600	6.60	16.00	65.78	16.44	3.16	16.63	4.89	5.24	5.24	218 048 760	218 048 999
		5	6000	8.28	16.50	77.89	19.47	3.12	19.98	5.97	6.50	6.50	218 050 000	-
100	50	4	7600	7.47	14.90	111.05	22.60	3.89	18.04	5.24	5.80	5.80	218 056 760	-
		5	6000	9.13	15.00	131.80	26.48	3.82	21.76	6.21	7.17	7.17	218 058 000	-
120	60	6	6000	13.38	18.00	275.00	45.80	4.60	45.00	10.70	10.50	10.50	218 066 000	-
140	60	6	6000	14.39	16.70	397.00	56.80	5.29	47.62	10.99	11.33	11.33	218 070 000	-
160	65	6	6000	18.47	17.30	596.00	74.50	6.06	62.70	13.10	12.00	12.00	218 073 000	-
<b>Material: S 355 MC</b>														
100	60	5	6000	10.00	19.00	155.00	30.90	3.93	36.30	8.84	7.83	7.83	218 223 000	-
120	60	6	6000	12.96	18.00	275.00	45.80	4.60	45.10	10.70	10.17	10.17	218 226 000	-
140	70	6	6000	15.40	20.50	450.00	64.40	5.41	73.50	14.80	12.17	12.17	218 229 000	-
			7600	15.40	20.50	450.00	64.40	5.41	73.50	14.80	12.17	12.17	218 229 760	-
160	70	7	6000	19.10	19.70	700.00	87.50	6.10	87.60	17.40	15.33	15.33	218 232 000	-
200	80	8	6000	26.63	21.39	1508.87	150.80	7.53	154.40	26.34	21.00	21.00	218 238 000	-
220	80	8	6000	28.23	20.41	1899.60	172.69	8.20	159.04	26.69	21.83	21.83	218 240 000	-

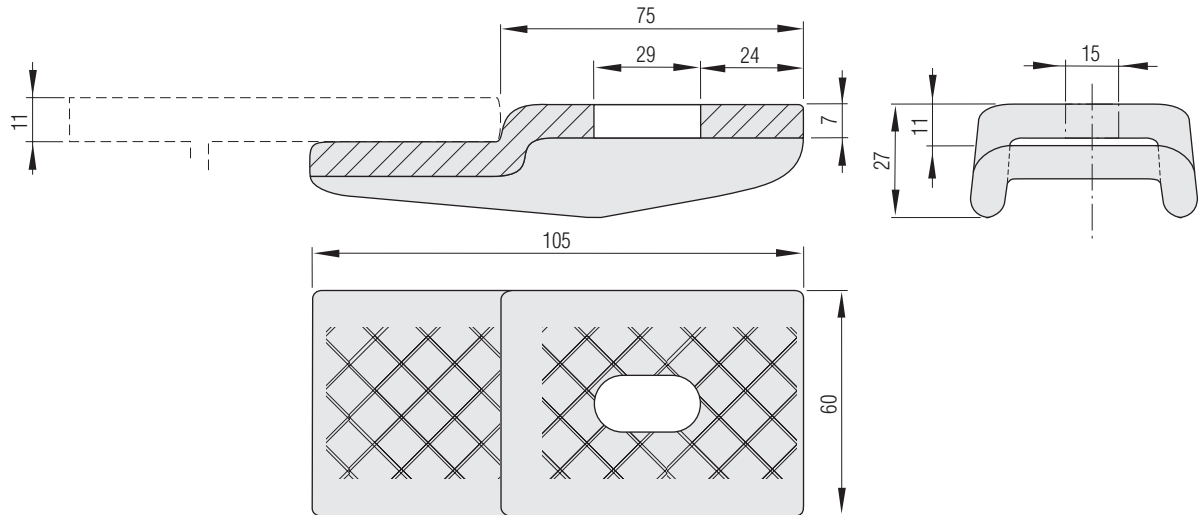
Special U-shaped structural steel profile measurements available on request.

<sup>1</sup> Weld-primed, suitable for welding without pre-treatment.

# Subframe clamp

## Substructure carrier

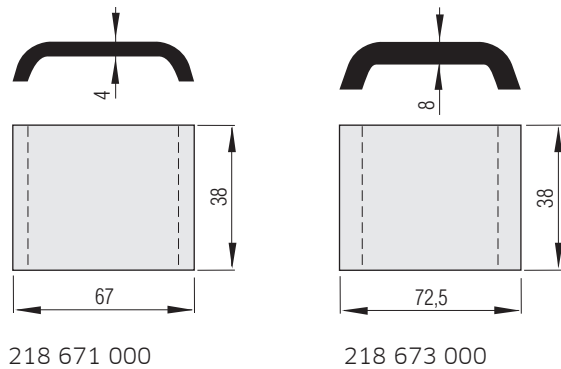
Material: galvanised steel  
 Weight: approx. 0.72 kg/each  
 Article No. 218 668 000



## Spacer plate / Shim

Packing piece for substructure carrier

Article No. 218 668 000  
 Material: Steel, galvanised



218 671 000

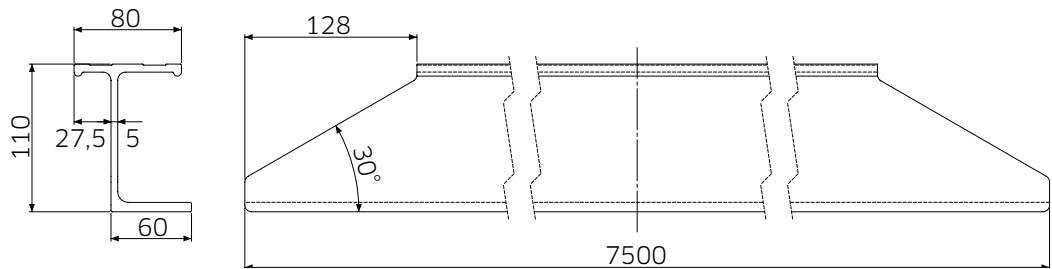
218 673 000

Thickness of the material [mm]	For wall thickness [mm]	Weight approx. [kg/each]	Article No.
4.0	8.0	0.10	218 671 000
8.0	6.0	0.20	218 673 000

# GETO® Frame Alu

## Components for the base assembly system

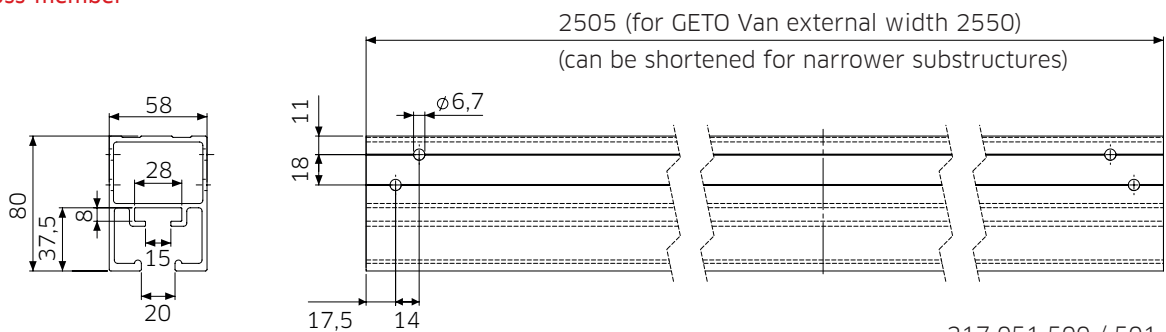
### Aluminium longitudinal member



224 037 750 / 748

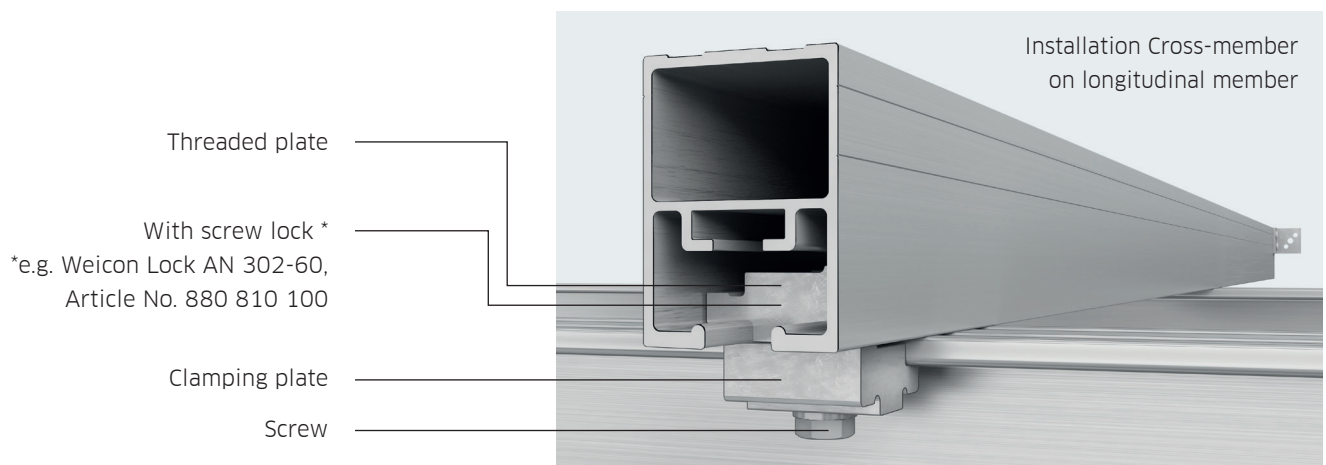
Height [mm]	Lenght [mm]	Profile thickness [mm]	Wx [cm²]	Jx [cm²]	Surface	Weight appr. [kg/each]	Article No.
110	7500	5 / 7	50,4	289	anodised	28,65	224 037 750
110	7500	5 / 7	50,4	289	plate finish	28,65	224 037 748

### Aluminium cross-member



217 051 500 / 501

Height [mm]	Lenght [mm]	Profile thickness [mm]	Wx [cm²]	Jx [cm²]	Surface	Weight appr. [kg/each]	Article-No.
80	2505	2,5 / 3	18,37	70,9	anodised	6,79	217 051 500
80	2505	2,5 / 3	18,37	70,9	plate finish	6,79	217 051 501



# GETO® Frame Alu

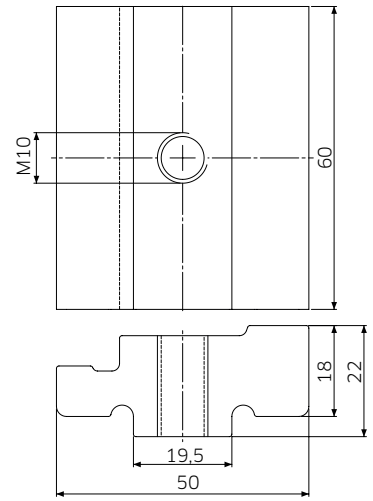
## Components for the base assembly system

### Installation kit for aluminium cross-members

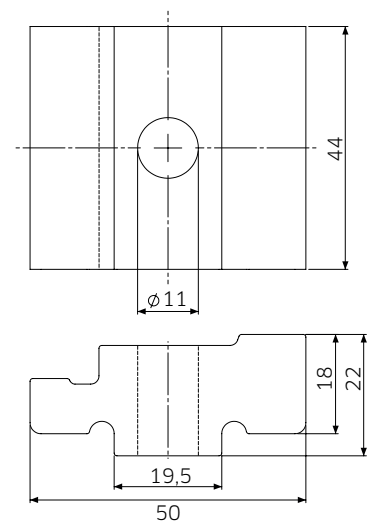
Article-No. 217 098 006

– Sufficient for 5 aluminium cross members (217 051 500 / 501), a kit consists of:

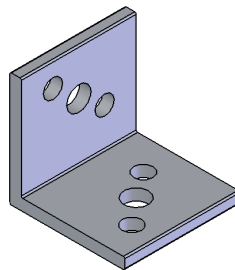
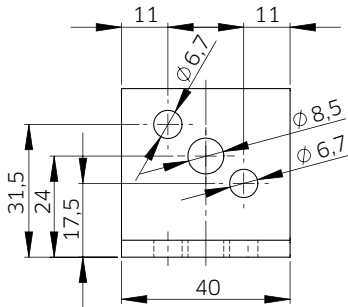
- 10x Screw, M10 x 45 flznncl, 241 940 005, w/o illustration
- 10x Washer, A10,5 flznncl, 241 940 006, w/o illustration
- 10x Threaded plate, Alu 60 x 50, 218 704 000
- 10x Clamping plate, Alu 44 x 50, 218 705 000
- 10x Alu bracket, 40 x 40 x 4, 224 033 000
- 20x TiBulb blind rivet, 6,4 x 12,5 St/St, 413 021 900, w/o illustration



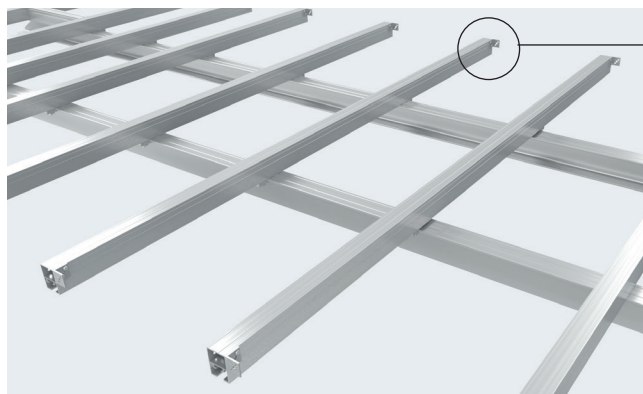
218 704 000



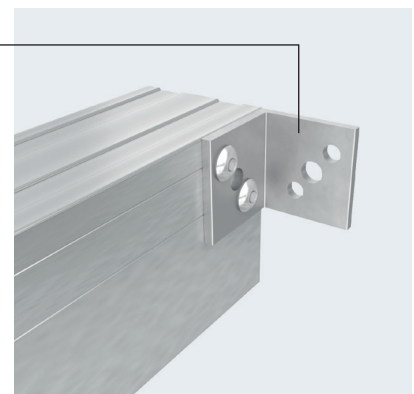
218 705 000



224 033 000



Aluminium bracket, ready to fasten the side rafter profile



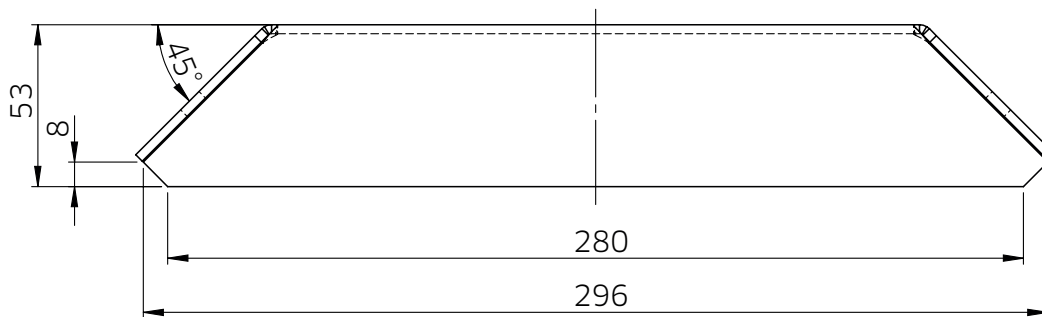
# GETO® Frame Alu

## Components for the base assembly system

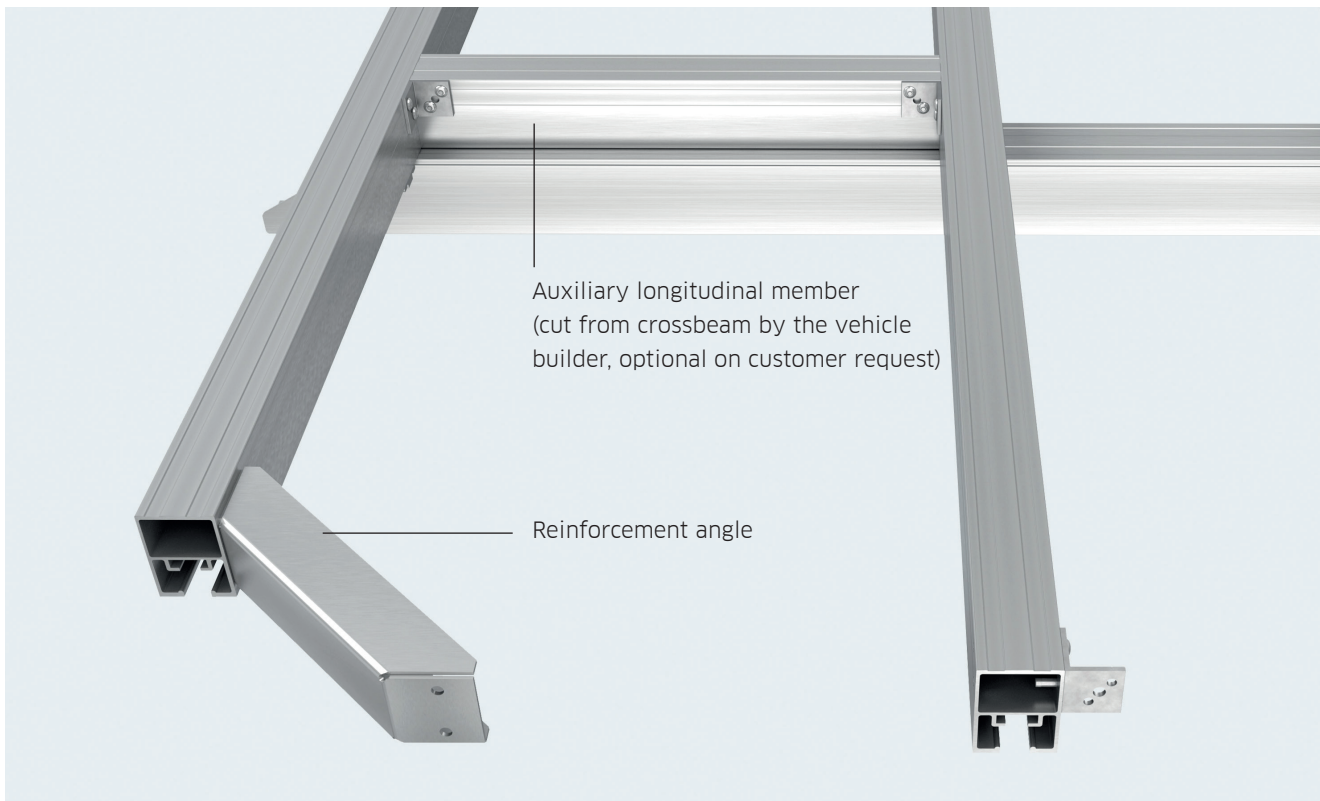
### Reinforcement kit for aluminium base assembly system (for greater load-bearing capacity on the bulkhead)

Article No. 217 098 009

- reinforced the front left and right corners
- A kit consists of:
  - 2x Reinforcement angle, galvanised, 217 084 000
  - 8x TiBulb blind rivet, 413 022 900, 6,4 x 14,5 St/St, w/o illustration
  - 8x Washer, 890 659 000, 6,4 x 21 x 1,8 mm according to DIN 9021



217 084 000



Auxiliary longitudinal member  
(cut from crossbeam by the vehicle  
builder, optional on customer request)

Reinforcement angle



# GETO® Frame Alu

## Components for the base assembly system

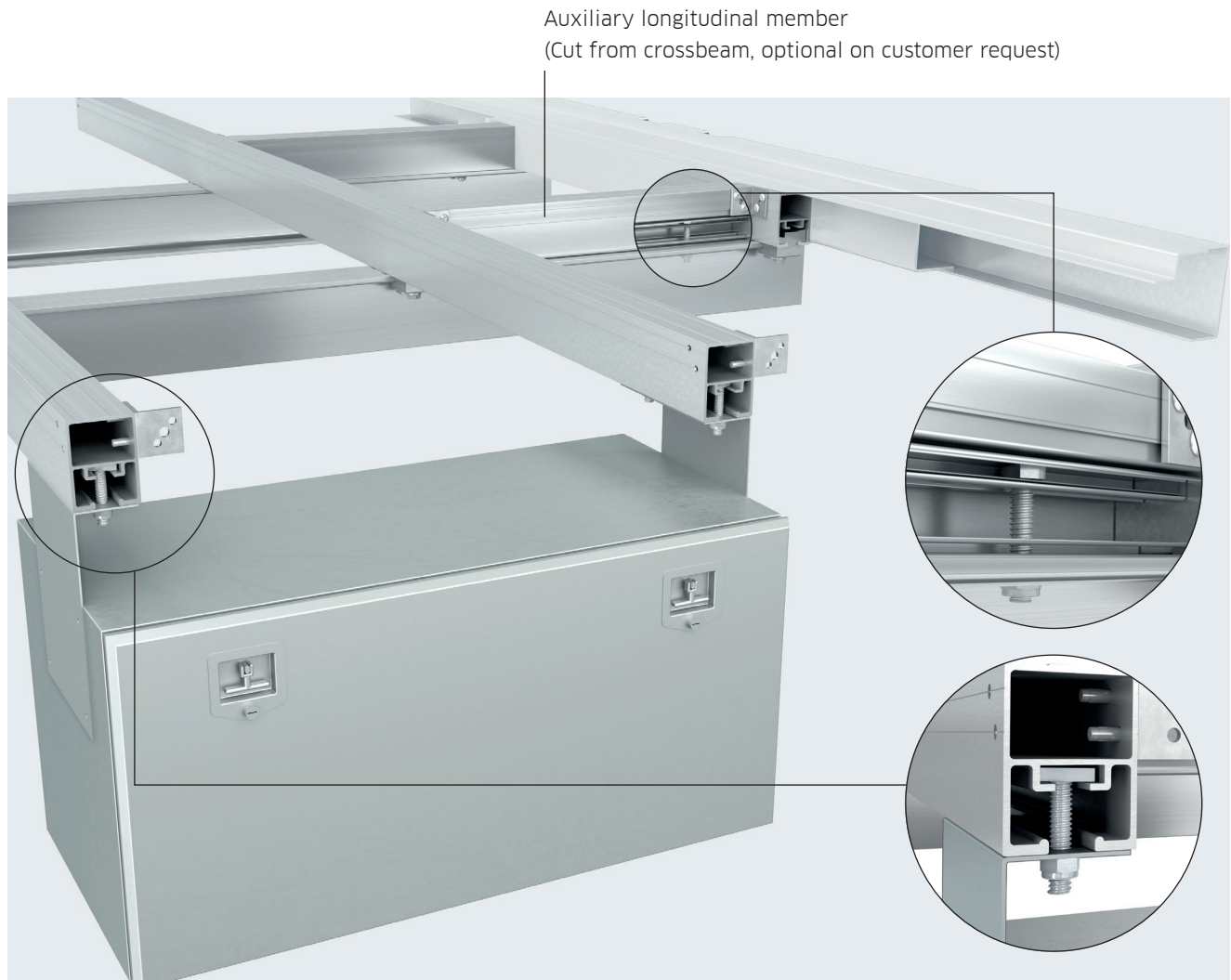
### Accessory kit for the aluminium base assembly system

Article No. 217 098 008

- e.g. for retrofitting attachments
- A kit consists of:
  - 4x Hammerhead screw, M10 x 50 A2 stainless steel, 246 712 000
  - 4x Nut, stainless steel, 661 167 000, w/o illustration
  - 4x Washer, stainless steel, 241 940 007, w/o illustration



246 712 000



\*1: Example: Installation of an auxiliary longitudinal member with a hammerhead screw

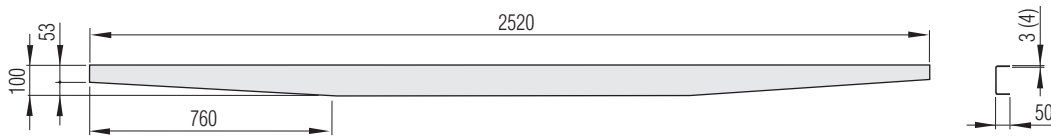
\*2: Example: Installation of a toolbox with a hammerhead screw

# Cross-members

## Cross-members for truck bodies

- Pressed version
- Stamped
- Not pre-drilled
- Untreated
- Tolerance in acc. with DIN 6930

Material: S 235 JR, raw



218 628 000  
218 629 000

Height [mm]	Length [mm]	Profile thickness [mm]	Wx [cm³]	Jx [cm⁴]	Weight approx. [kg/each]	Article No.
100	2520	3	17.5	87.5	10.2	218 628 000
	2520	4	22.5	112.5	13.9	218 629 000

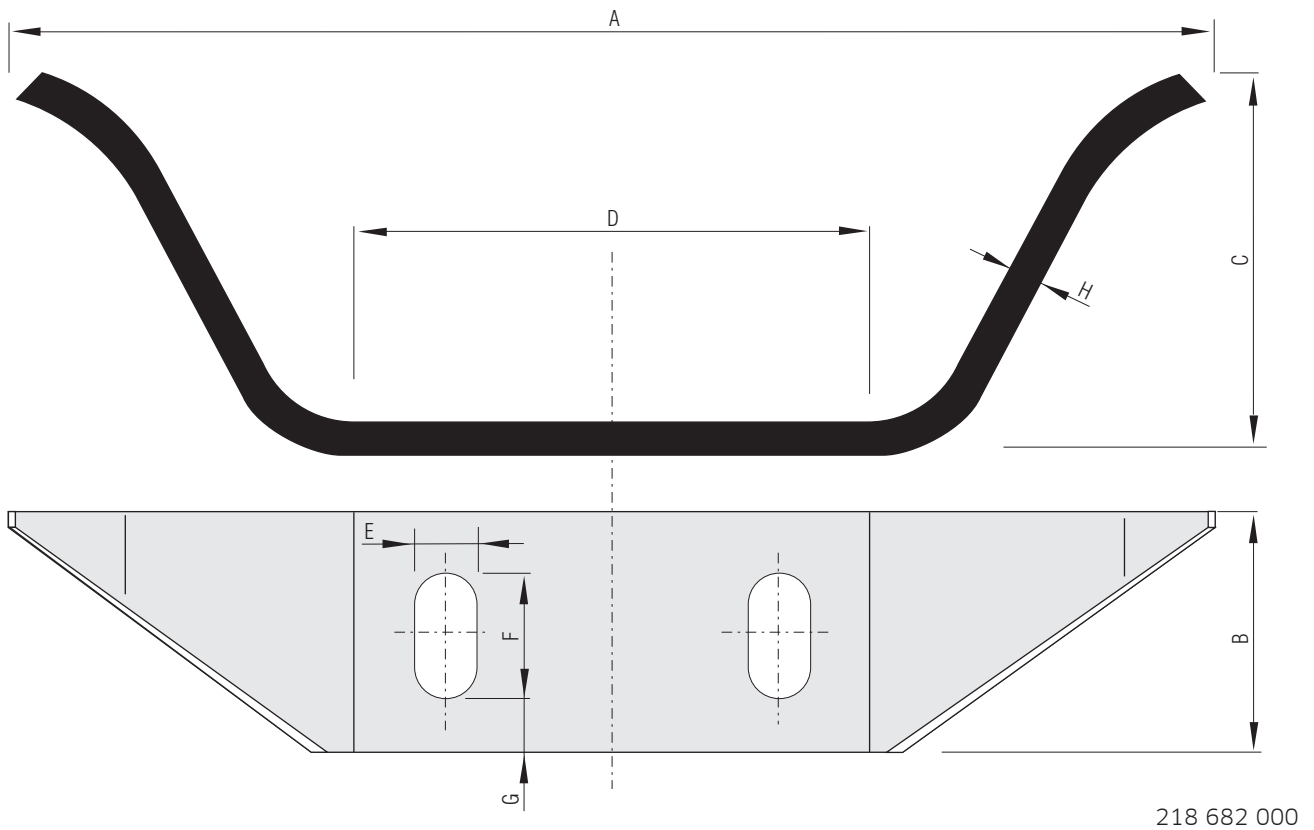
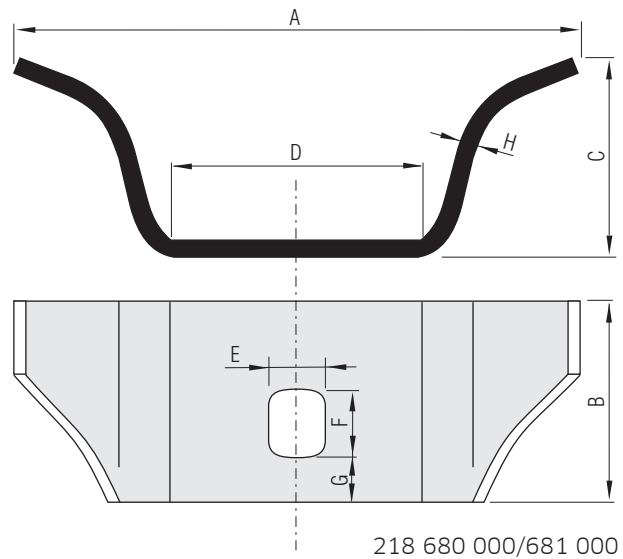
All cross-members are also available sand-blasted and primed on request

# Subframe brackets

## Subframe brackets

Subframe brackets are welded on to the chassis subframe. When fastened to the standard bracket on the chassis, the subframe bracket is used to connect the subframe complete with D pre-fitted cross-members to the standard chassis.

**Material:** untreated steel



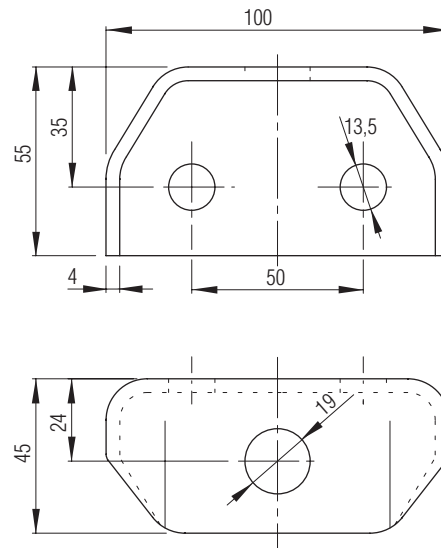
A	B	C	D	E	F	G	H	Weight approx.	Article No.
[mm]	[mm]	[mm]	[mm]	[cm <sup>2</sup> ]	[mm]	[mm]	[mm]	[kg/each]	
110	50	40	51	13	20	14	5	0.23	218 680 000
162	60	74	66	16	25	15	6	0.65	218 681 000
288	60	93	146	15	30	15	8	1.04	218 682 000 <sup>1</sup>

<sup>1</sup> For use with MAN

## Subframe brackets

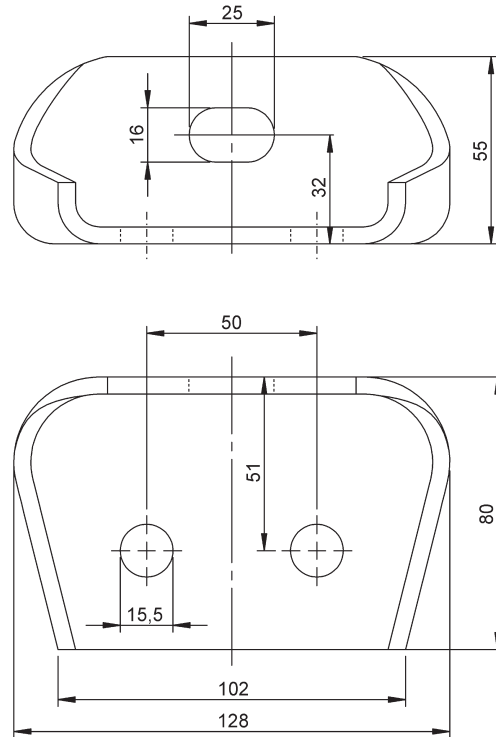
### Subframe bracket for MB Atego

Material thickness: 4 mm  
 Finish: black paint  
 Material: steel, S 380 MC  
 Weight: 0.28 kg/each  
 Article No. 218 675 000



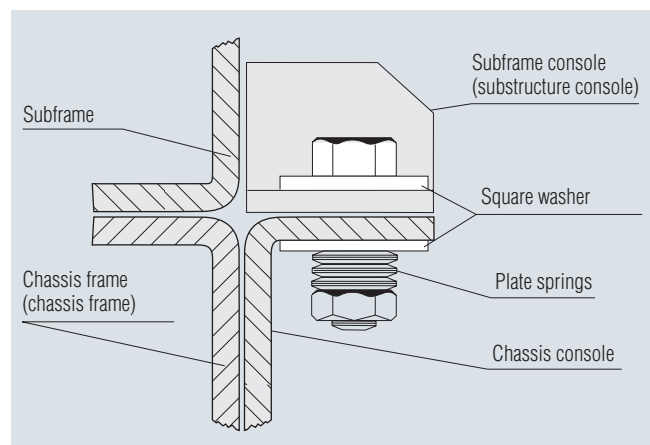
### Substructure console for MB Actros

Material strength: 5 mm  
 Finish: KTL coated/anthracite grey  
 Material: steel (DD 13)  
 Weight: 0.70 kg/each  
 Article No. 218 676 000



### Bracket fastener

When assembling bodies onto various truck chassis, the following guidelines apply for mounting the brackets:  
 For chassis fitted with standard brackets, the body should, wherever possible, be fastened to these brackets. At the same time, it must be ensured that the finished mounting is elastic (e.g. by using plate washers as a shim) and that there is enough space between the bracket on the body and the chassis.

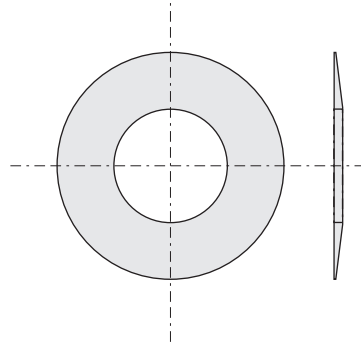


# Springs and washers

## Plate washers

To fasten the subframe brackets; internal and external diameters rounded off.

**Material:** Cold-rolled steel; reliably tempered through special process; hardened surface; phosphate coated for corrosion protection.

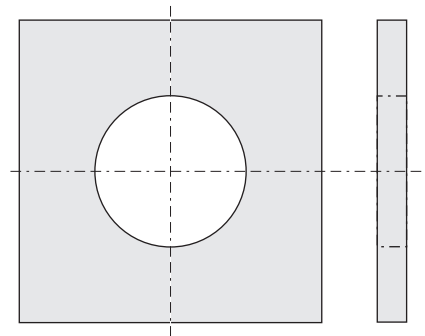


External ø	Internal ø	Material thickness	Weight approx.	Article No.
[mm]	[mm]	[mm]	[kg/each]	
25.0	12.2	0.7	0.002	218 684 000
28.0	14.2	0.8	0.003	218 686 000
31.5	16.3	0.8	0.004	218 688 000
40.0	14.3	2.0	0.016	218 689 000

## Square washers

We recommend these washers for fastening the subframe brackets (slotted holes)

**Side length:** 40 mm  
**Thickness of the material:** 4 mm  
**Material:** galvanised steel



Internal ø	Weight approx.	Article No.
[mm]	[kg/each]	
13.0	0.045	218 696 000
15.0	0.043	218 697 000

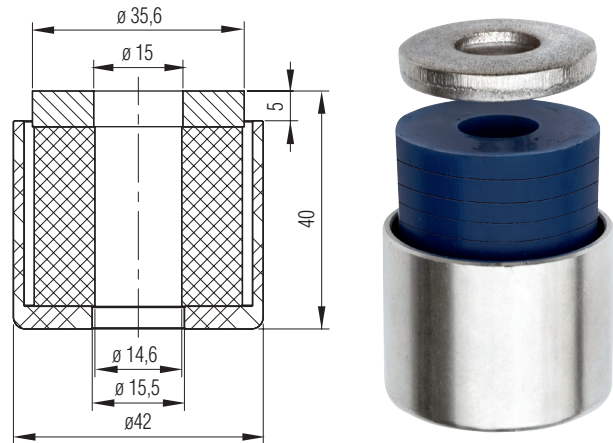
# elastic blue® shock absorber units

## elastic blue® shock absorber unit

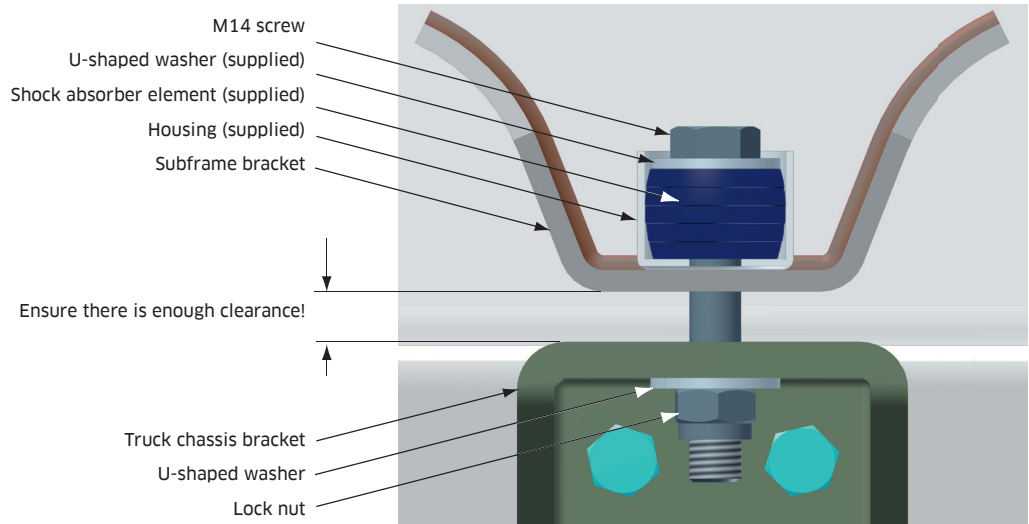
To connect the chassis to the subframe

In order to facilitate movement of the chassis relative to the body, the forward connecting sections generally incorporate a resilient mounting. The elastic blue® shock absorber unit is a flexible fixture consisting of a bush open at one end and a washer. This has led to a 40% increase in bearing capacity.

- No torque wrench required
- Only requires a visual inspection
- Quick installation
- Can be fitted on or under the brackets



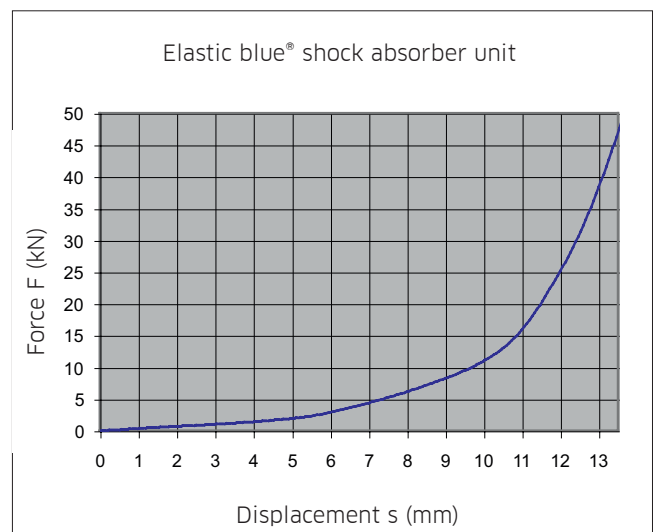
Article No. 218 693 000



Maximum load = 56 kN

Example: For a spring displacement of 3 mm (the washer combined with the housing form a plane), the clamp strength is approx. 1000 N

Always follow the chassis manufacturer's assembly guidelines!

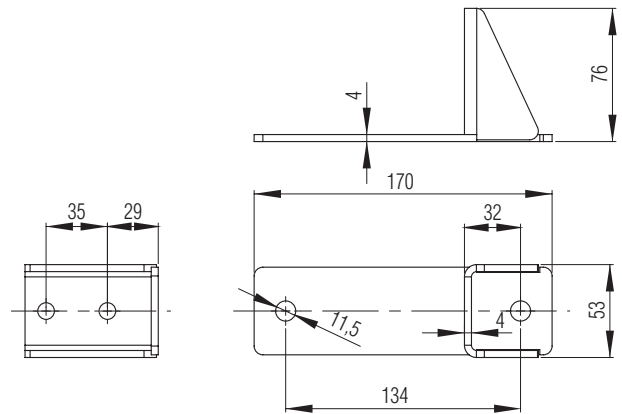


# Subframe brackets for lightweight trucks

## Bracket, basic version

- For single and twin tyres
- Specially designed for Mercedes Sprinter and VW Crafter (up to 2016)

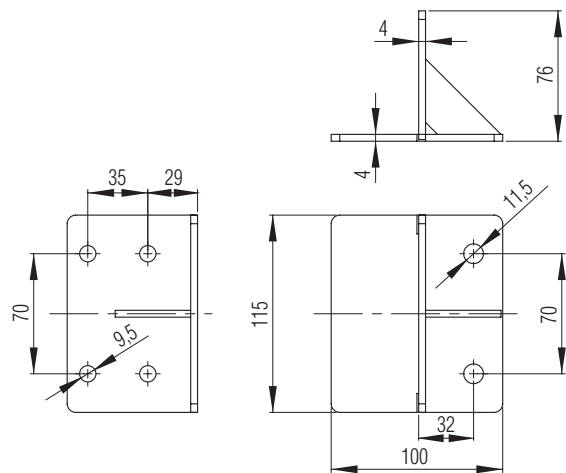
**Material:** steel, S355MC  
**Finish:** hot-dip galvanised  
**Weight:** 0.46 kg/each  
**Article No.** 218 683 000



## Double bracket, front

- For single and twin tyres
- Specially designed for Mercedes Sprinter and VW Crafter (up to 2016)

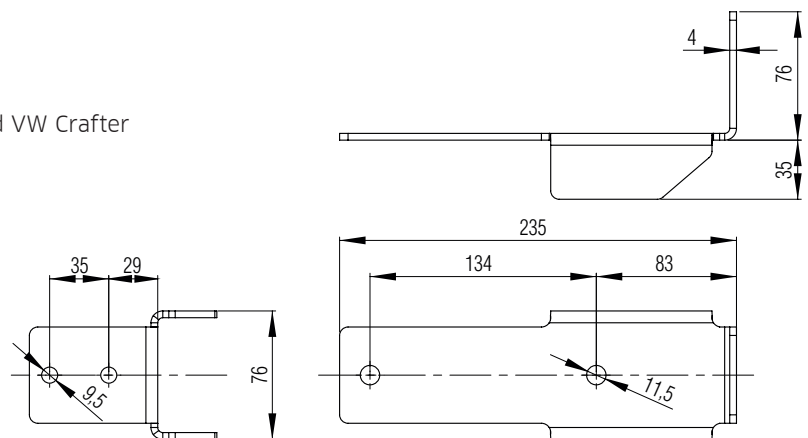
**Material:** steel, S355MC  
**Finish:** hot galvanised  
**Weight:** 0.65 kg/each  
**Article No.** 218 683 002



## Long bracket

- For twin tyres
- Specially designed for Mercedes Sprinter and VW Crafter (up to 2016)

**Material:** steel, S355MC  
**Finish:** hot-dip galvanised  
**Weight:** 0.8 kg/each  
**Article No.** 218 683 001

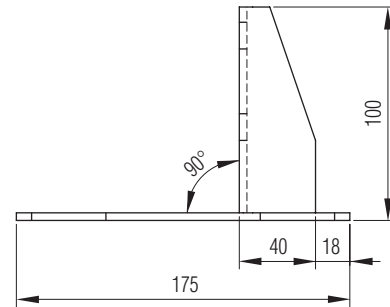
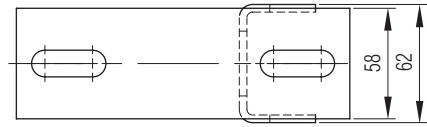


## Subframe brackets for lightweight vehicles

### Flat bracket

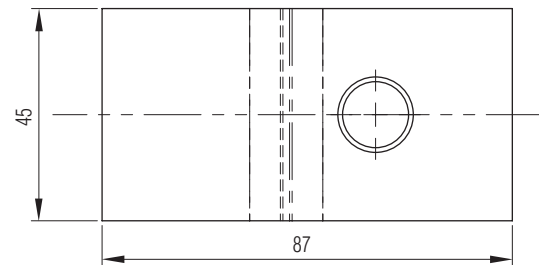
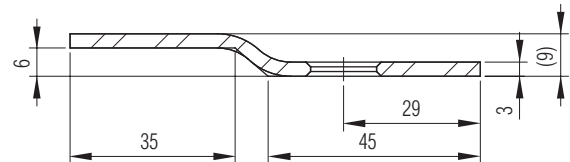
- For single tyres
- Specially designed for Ford Transit (also possible with twin tyres), Opel Movano, Renault Master and Nissan NV 400

Material: steel, S355MC  
 Finish: hot-dip galvanised  
 Weight: 0.63 kg/each  
 Article No. 218 683 006



### Connecting plate for bracket 218 683 006

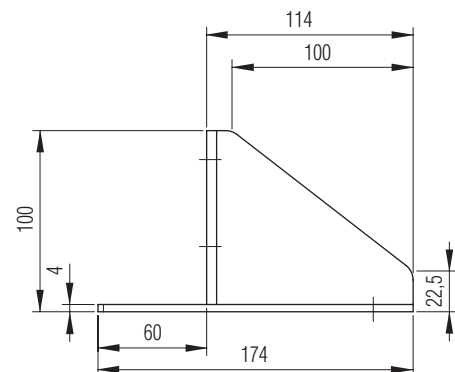
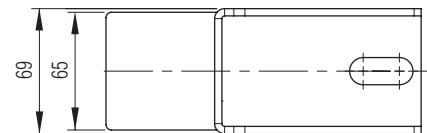
Material: steel, S355MC  
 Finish: hot-dip galvanised  
 Weight: 0.09 kg/each  
 Article No. 218 683 007



### Flat bracket

- For twin tyres
- Specially designed for Opel Movano and Renault Master

Material: steel, S355MC  
 Finish: hot-dip galvanised  
 Weight: 0.89 kg/each  
 Article No. 218 683 008



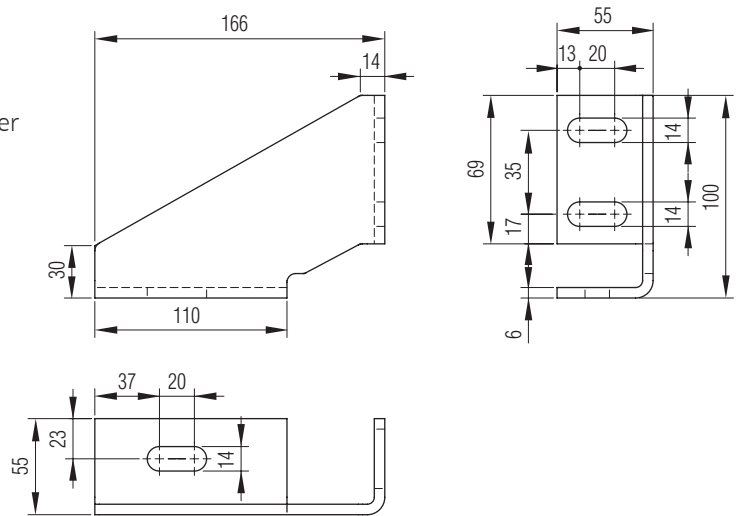


## Subframe brackets for lightweight vehicles

### Bracket, basic version, right

- For single tyres
- Specially designed for Peugeot Boxer, Citroen Jumper and Fiat Ducato

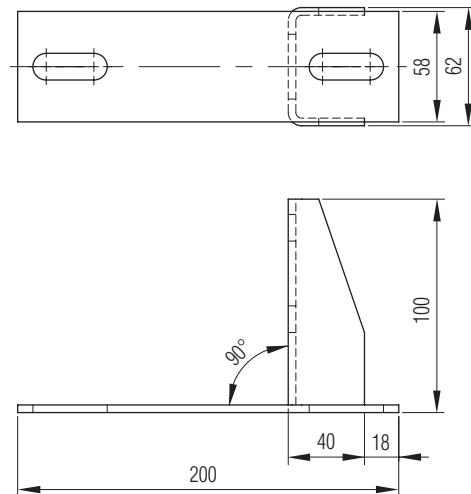
**Material:** steel, S355MC  
**Finish:** hot-dip galvanised  
**Weight:** 0.88 kg/each  
**Article No.** 218 683 004



### Flat bracket

- For single tyres
- Specially designed for Peugeot Boxer, Citroen Jumper, Fiat Ducato, MAN TGE and VW Crafter (constructed since 2017)

**Material:** steel, S355MC  
**Finish:** hot-dip galvanised  
**Weight:** 0.68 kg/each  
**Article No.** 218 683 005

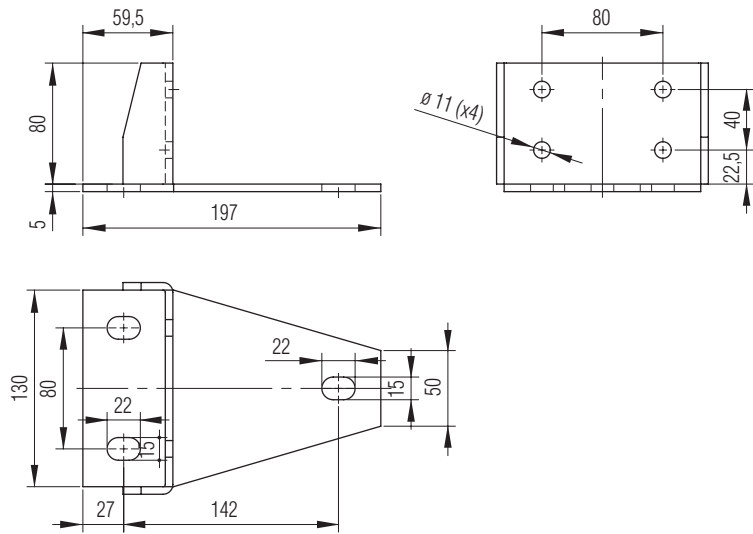


## Subframe brackets for lightweight vehicles

### Double bracket, front

- For single and twin tyres
- Specially designed for MAN TGE and VW Crafter (constructed since 2017)

**Material:** steel, S355MC  
**Finish:** hot-dip galvanised  
**Weight:** 1.30 kg  
**Article No.** 218 683 009



## TALS side rave profiles

### Cargo control in acc. with DIN 12640

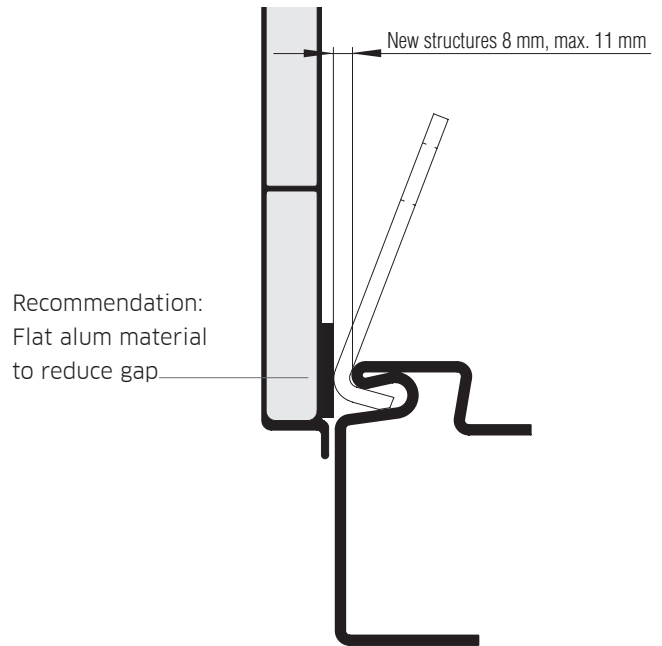
Max. tensile force 2500 daN (kg)

- Lashing straps hook around the outer rave rail in the side rave groove
- On bodywork systems, the lashing strap studs are held secure in the side rave groove by the dropside. Always refer to the data provided in the illustrations to ensure the proper functioning of the system
- No water accumulates in the side rave groove as it is angled downwards.

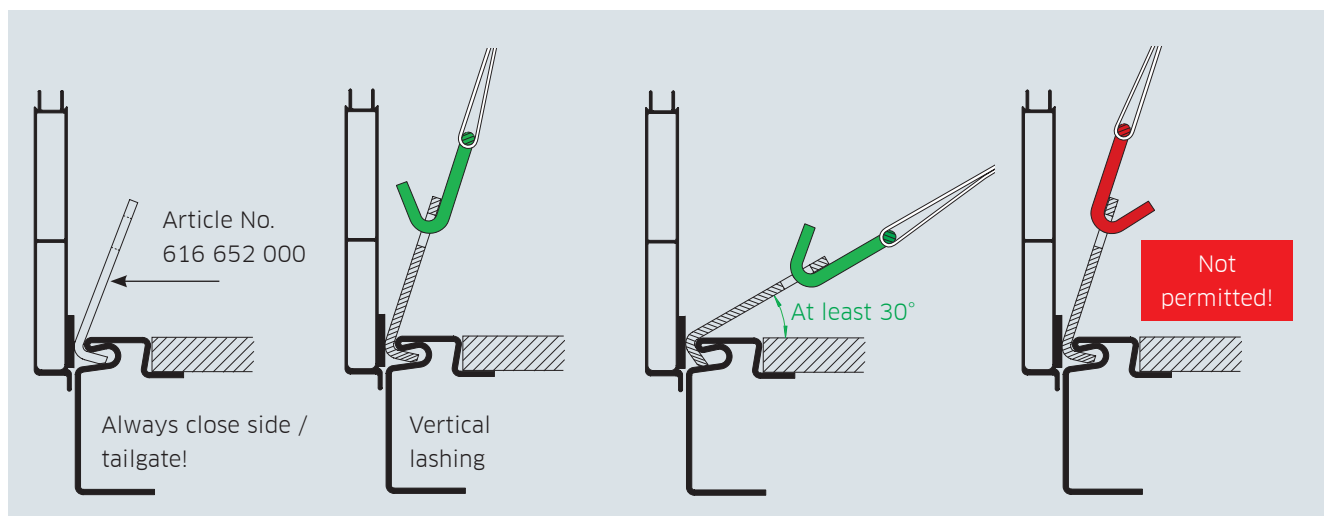
#### Please Note:

Always inform the operator of the need to secure the lashings properly!

Decal Article No. 616 659 000 Please attach to vehicle in a clearly visible location.



### Lashings on bodywork systems



## TALS side rave profiles

### Cargo control in acc. with DIN 12640

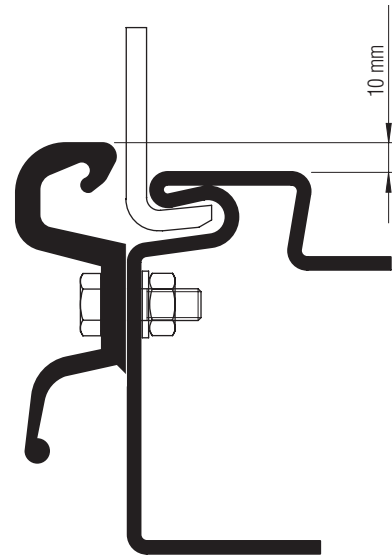
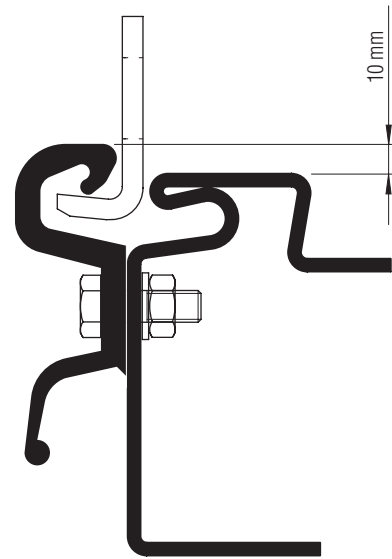
Max. tensile force 2500 daN (kg)

- Lashing straps hook around the outer rave rail in the side rave groove
- Lashing strap studs held secure by the multi-functional profile. Always refer to the data provided in the illustrations to ensure the proper functioning of the system
- No water accumulates in the side rave groove as it is angled downwards

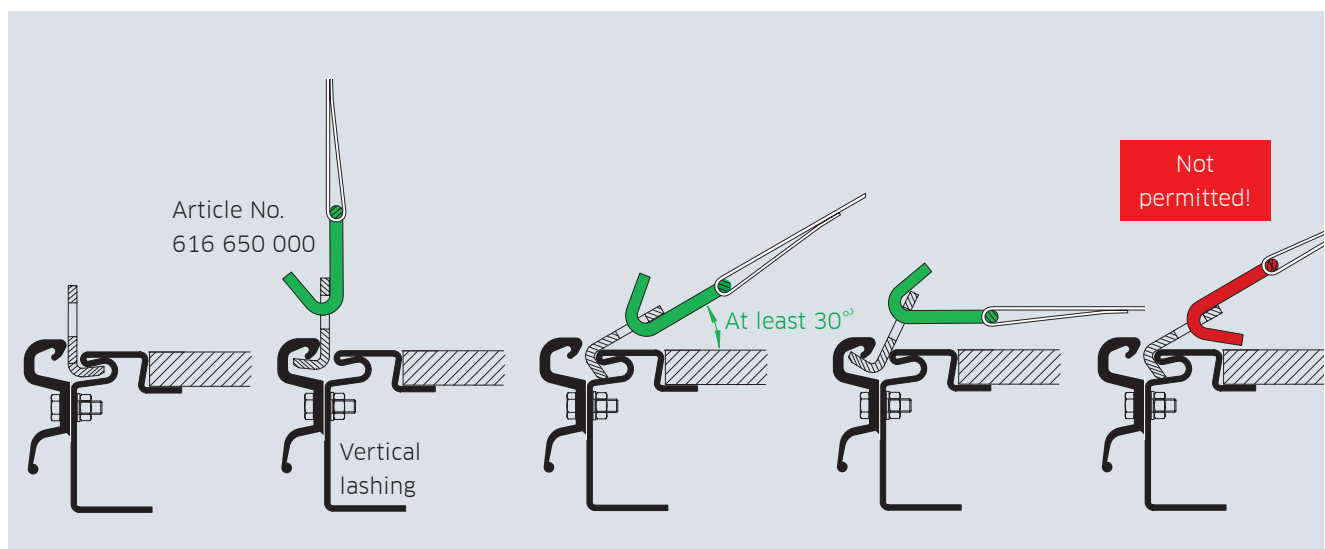
#### Please note:

Always inform the operator of the need to secure the lashings properly!

Adhesive label Article No. 616 659 000 must be affixed to the vehicle in a clearly visible position.



### Lashings on curtainsider trailers

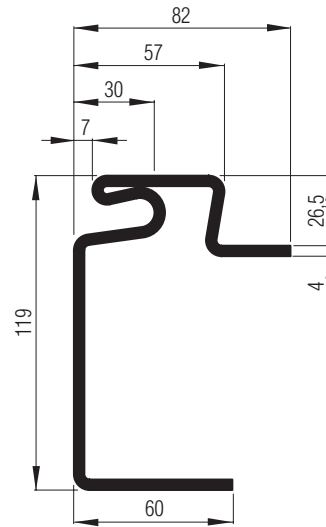


# TALS side rave profiles

## TALS side rave profile

- With integrated lashing groove

<b>Strength values:</b>	$I_x$ = approx. 255 cm <sup>4</sup>
	$W_1$ = approx. 35 cm <sup>3</sup>
	$W_2$ = approx. 49 cm <sup>3</sup>
<b>Material:</b>	S 420 MC
<b>Finish:</b>	untreated steel
<b>Weight:</b>	approx. 10.0 kg/m
<b>Article No.</b>	218 590 750 - Length 7500 mm



## TALS stop cam

- Weldable; required every 400 mm in order to brace and close off the TALS side rave profile!

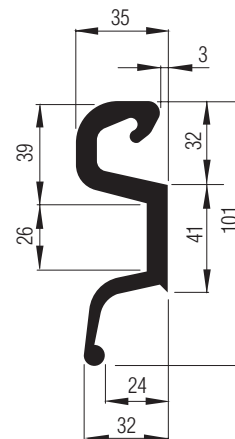
<b>Width:</b>	22 mm
<b>Material:</b>	cast steel
<b>Finish:</b>	untreated
<b>Weight:</b>	0.20 kg/each
<b>Article No.</b>	218 591 000



## TALS multi-functional profile

- For lashing the side sliding curtains to protect them from being bumped during fork-lift loading operations and for securing the lashing strap studs

<b>Length:</b>	3600 mm
<b>Material:</b>	aluminium
<b>Finish:</b>	mill finish
<b>Weight:</b>	3.34 kg/m
<b>Article No.</b>	218 595 000

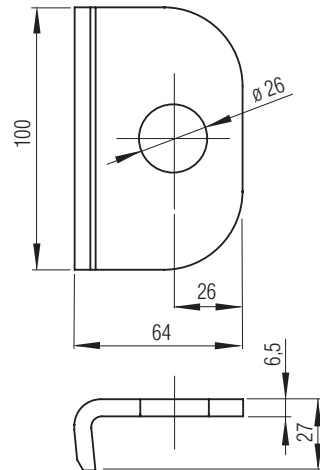


## TALS side rave profiles

### TALS strap adapter

– For use on curtainsider kits

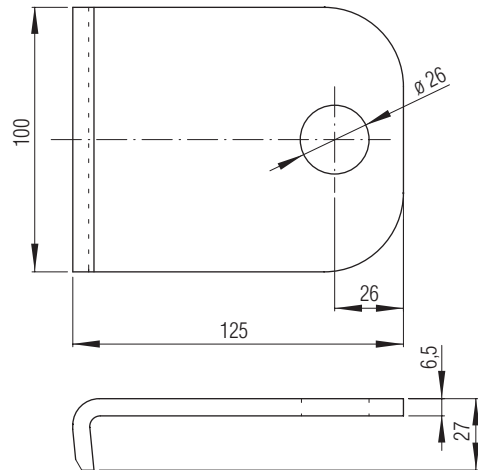
**Material:** steel  
**Finish:** electro galvanised  
**Weight:** 0.35 kg/each  
**Article No.** 616 650 000



### TALS strap adapter, long

– For use on bodywork systems with dropsides

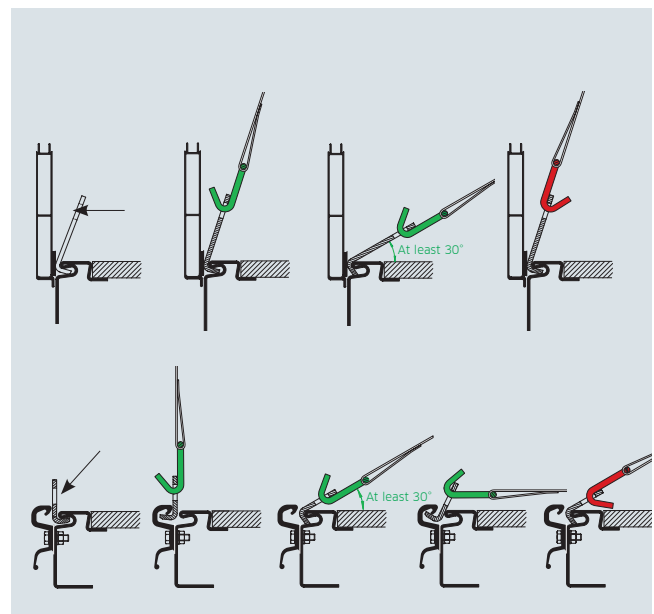
**Material:** Steel  
**Finish:** electro galvanised  
**Weight:** 0.67 kg/each  
**Article No.** 616 652 000



### Decal

– With lashing instructions for operators, self-adhesive, 220 x 210 mm

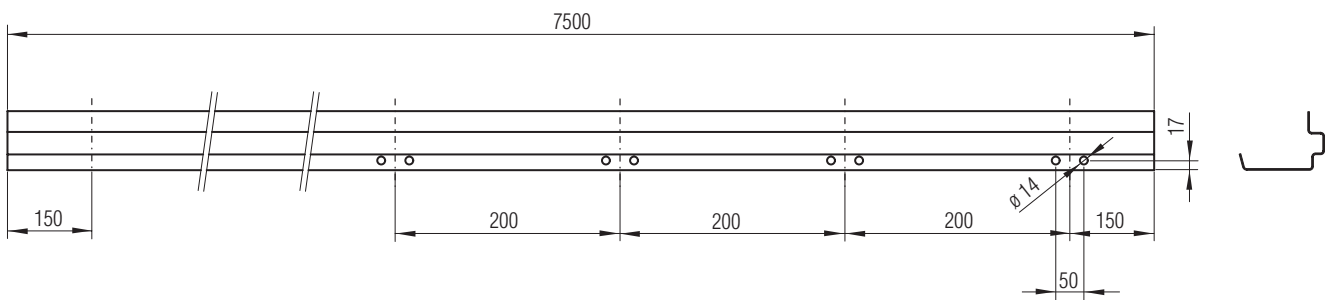
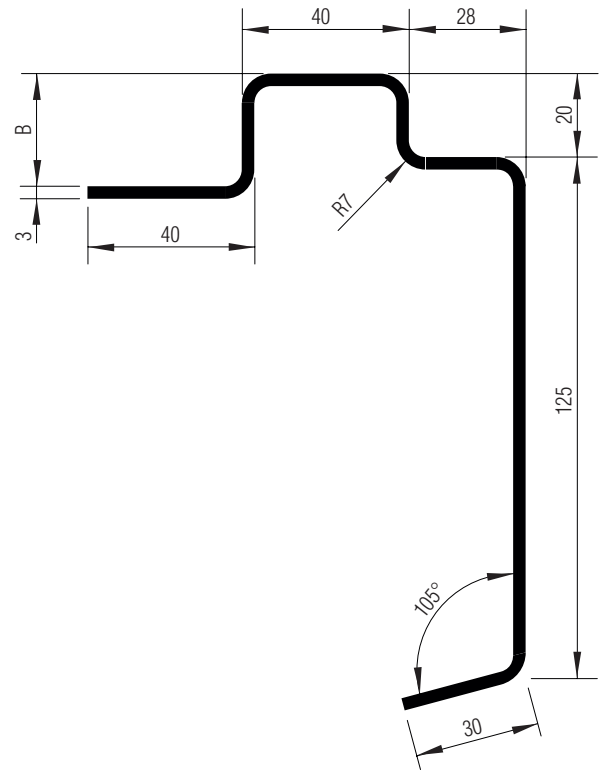
**Article No.** 616 659 000



# Floor frame profiles for lashing bars

## Floor frame profiles

To house lashing bars with hole template as per drawing



## Technical specifications

Floor recess B	Lashing points [Quantity]	Length [mm]	Drill hole ø [mm]	Static values				Material	Finish	Weight approx. [kg/m]	Article No.
				I <sub>x</sub> [cm <sup>4</sup> ]	I <sub>y</sub> [cm <sup>4</sup> ]	W <sub>x</sub> [cm <sup>3</sup> ]	W <sub>y</sub> [cm <sup>3</sup> ]				
27	36	7500	14	212.9	84.33	27.65	8.7	S 355 MC	Steel, raw	6.79	218 528 750
21	36	7500	14	215.2	81.6	22.35	10.48	S 355 MC	Steel, raw	6.65	218 525 750

All technical specifications contained in this brochure are approximate and no guarantee is given as to their accuracy. Designs are subject to change.

## Floor frame profiles for lashing bars

### Lashing bar with fixing plate

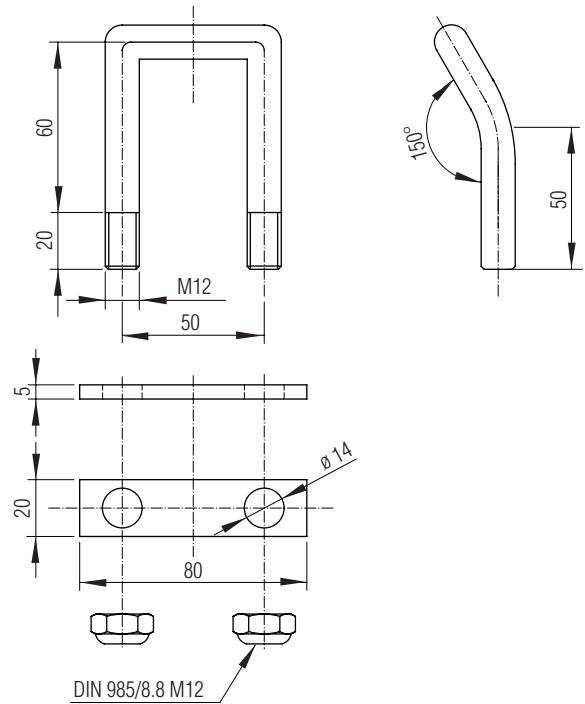
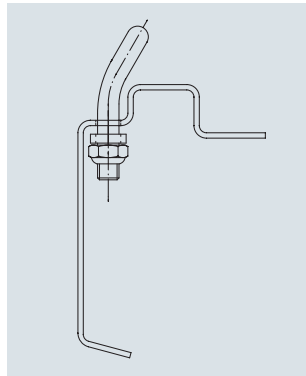
– With 2 x M 12 locking nuts

**Tensile force:** 2000 daN  
**Material:** galvanised steel  
**Weight:** 0.3 kg/each  
**Article No.** 218 530 000

The lashing bracket is TÜV certified in accordance with DIN EN 12640 for loads of 2000 daN.

**Please note:**

or the profiles shown on page 21.01.03.5, only the lashing bar versions that we have designated under Article No. 218 530 000 and 218 533 000 may be used.





## Floor frame profiles for lashing bars

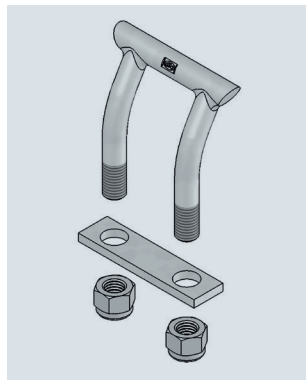
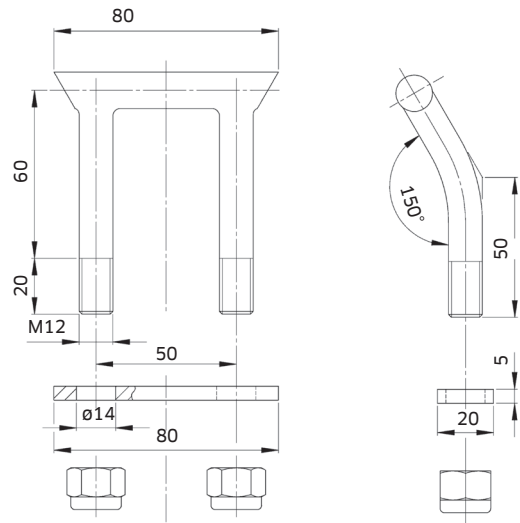
### Lashing shackle

For floor frame profiles 218 528 750 / 218 525 750 and GETO Sider Frame base frames.

#### Benefits:

The shackle design allows it to be lifted easily out of the side rive profile, even under awkward circumstances. It has been certified by DEKRA in acc. with DIN EN 12640 for loads of up to 2500 daN.

**Tensile force:** 2500 daN  
**Material:** galvanised steel  
**Weight:** 0.272 kg  
**Article No.** 218 533 000



Scope of delivery

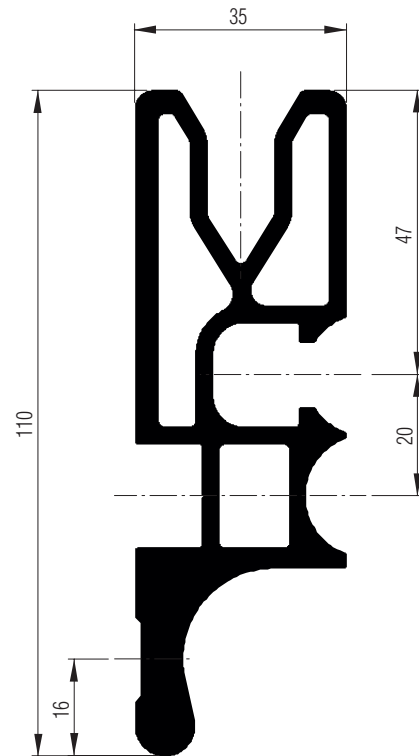
## Aluminium bumper and impact protection profile

### Aluminium bumper and impact protection profile with screw slots

Designed to protect curtainsider kits from being rammed or knocked during loading and unloading. What's more, the bottom edge can be used to attach the vertical curtain fasteners. BISON Safe Side cargo control battens and aluminum pyramid profile battens fit flush onto the upper profile.

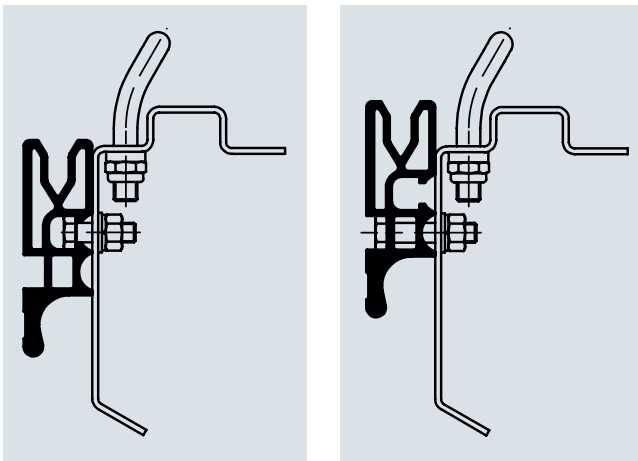
Use M 10 DIN 933 hexagon head set screws to fasten. Concealed or open screw slots can be used to connect the parts. When installing on the side rave profile of a GETO Sider Frame base frame, the hexagon head set screws located in the screw slots are pushed through the corresponding drilled hole on the side and fasten from the opposite side.

Length:	3500 mm
Installation height:	110 mm
Width:	35 mm
Material:	aluminium
Weight:	3.6 kg/m
Article No.	217 046 350



### Installation options

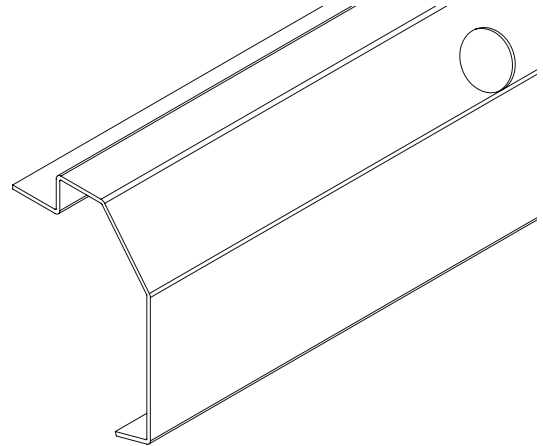
#### Aluminium bumper and impact protection profile



# Floor frame profile with hole template for lashing straps

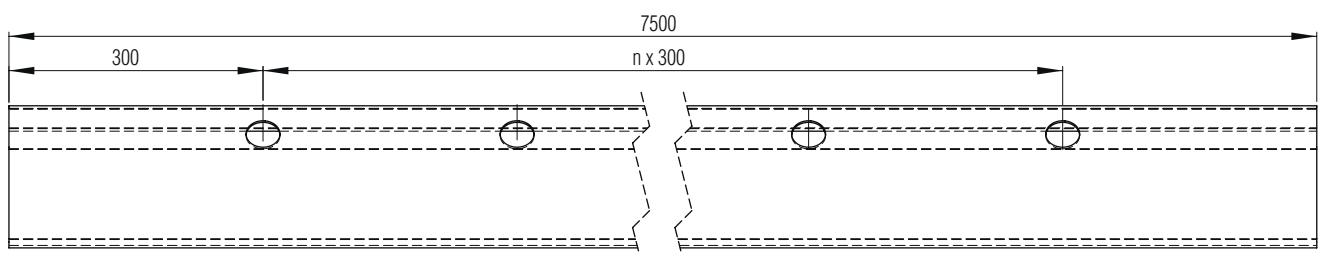
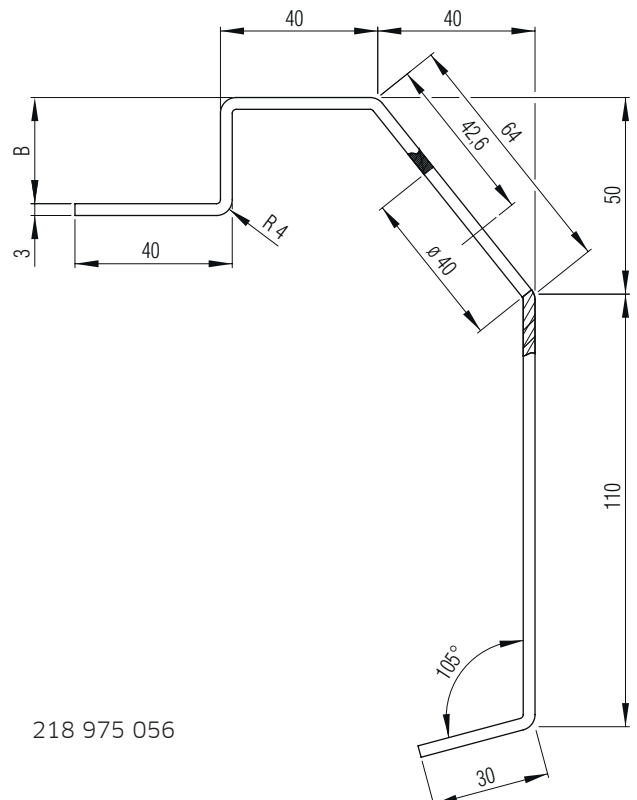
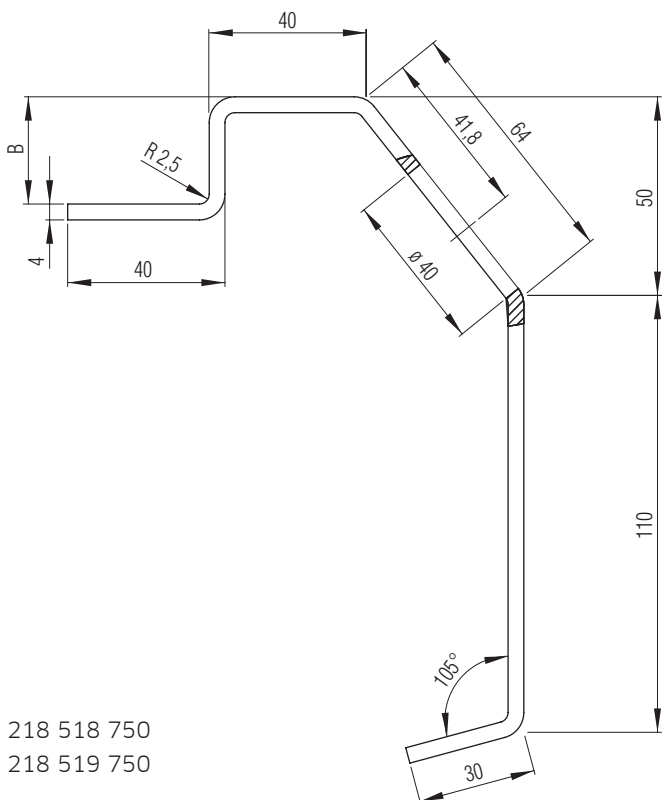
## Floor frame profiles, pre-drilled

On this base profile, 40 mm holes have been drilled through the outside of the angled section every 300 mm for the purpose of fitting cargo controls. The fasteners are turned with the dropside open. Once the lashing straps have been attached, the dropsides should close without difficulty. It is the vehicle manufacturer's responsibility to ensure that the lashing point to be used on the subframe is approved to DIN EN 12640.



## Technical specifications

Floor recess B	Lashing points	Length	Drill hole ø	Static values				Material	Finish	Weight approx.	Article No.
				I <sub>x</sub> [cm <sup>4</sup> ]	I <sub>y</sub> [cm <sup>4</sup> ]	W <sub>x</sub> [cm <sup>3</sup> ]	W <sub>y</sub> [cm <sup>3</sup> ]				
27	23	7500	40	429.50	73.50	41.40	8.83	S 355 MC	untreated steel	8.9	218 518 750
21	23	7500	40	336.19	53.70	32.27	6.32	S 355 MC	untreated steel	6.83	218 975 056
40	23	7500	40	418.70	84.38	40.50	10.40	S 355 MC	untreated steel	9.37	218 519 750

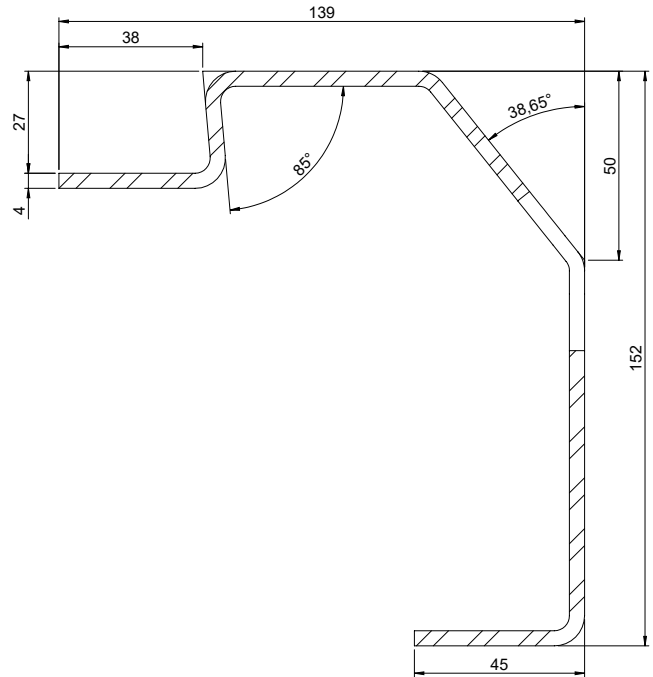


All technical specifications contained in this brochure are approximate and no guarantee is given as to their accuracy. Designs are subject to change.

# Floor frame profile with hole template for lashing straps

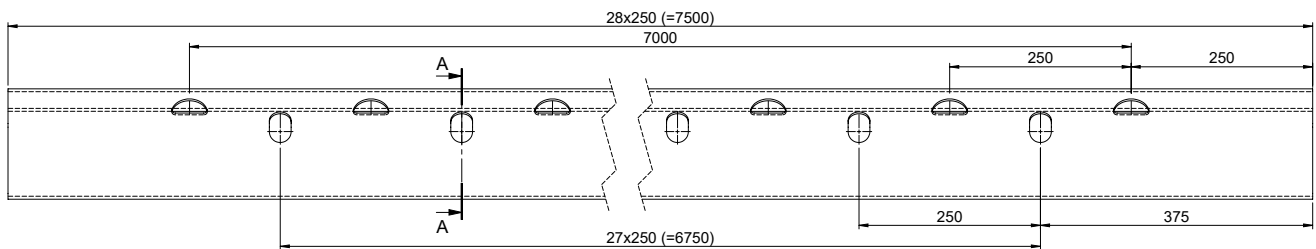
## Floor frame profiles, pre-drilled

On this base profile, 40 mm holes have been drilled through the outside of the angled section every 250 mm for the purpose of fitting cargo controls. The lashing straps are hooked into the upper holes with the dropside closed. It is the vehicle manufacturer's responsibility to ensure that the lashing point to be used on the subframe is approved to DIN EN 12640.



## Technical specifications

Floor recess B	Lashing points	Length [mm]	Drill hole ø [mm]	Static values				Material	Finish	Weight approx. [kg/m]	Article No.
				I <sub>x</sub> [cm <sup>4</sup> ]	I <sub>y</sub> [cm <sup>4</sup> ]	W <sub>x</sub> [cm <sup>3</sup> ]	W <sub>y</sub> [cm <sup>3</sup> ]				
27	-	7500	-	489.90	116.30	53.20	12.00	S 355 MC	untreated steel	10.4	218 975 144



## Floor frame profiles

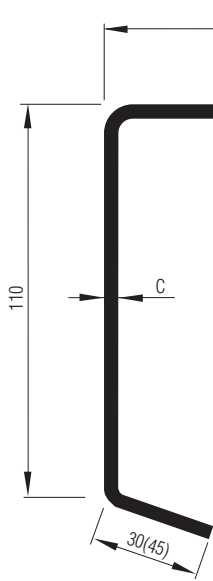


Figure 1

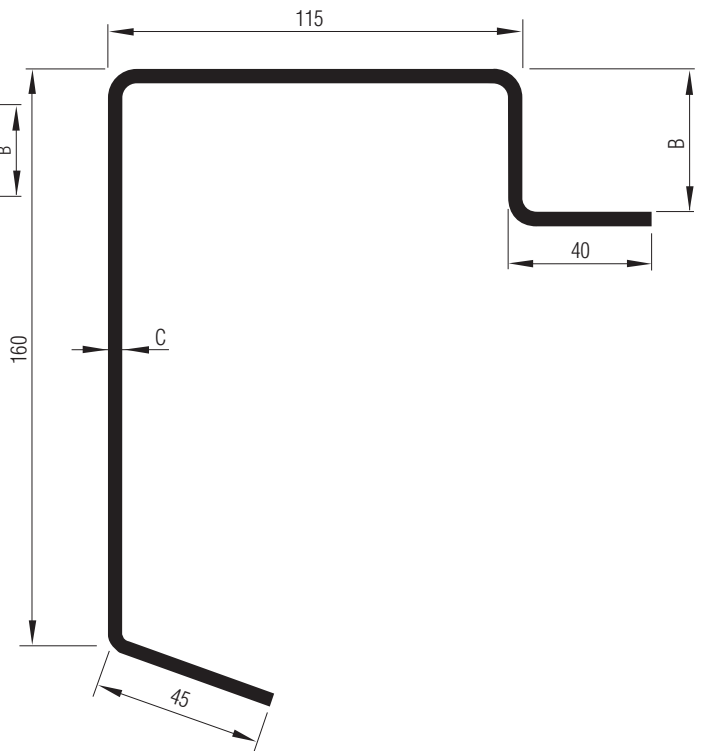


Figure 2

### Floor frame profiles

Figure	Profile height A	Floor recess B	Material thickness C	Manufacturing length	Moment of resistance (W <sub>x</sub> )	Weight approx.	Article No.
[No.]	[mm]	[mm]	[mm]	[mm]	[cm <sup>3</sup> ]	[kg/m]	
Material: S 235 JR							
2	160	27	4	7300	46.86	11.30	218 570 000
Material: S 380 MC							
1	110	21	3	7300	16.32	6.65	218 581 000

Bespoke dimensions, sand-blasted and weld-primed versions available on request

# Floor frame profiles

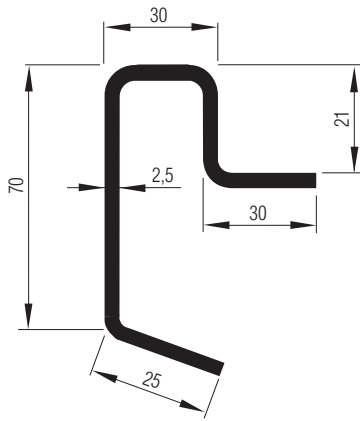


Figure 1

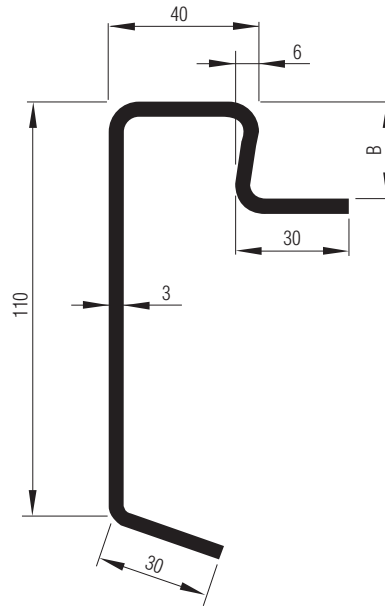


Figure 2

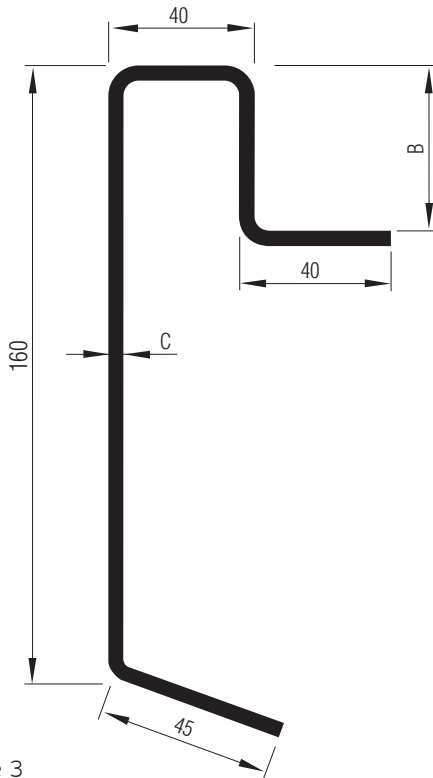


Figure 3

# Floor frame profiles

## Floor frame profiles

Figure	Profile height	Material thickness	Floor recess	Manufacturing	Moment of	Weight	Article No.
[No.]	A	C	B	length	resistance (W <sub>x</sub> )	approx.	
	[mm]	[mm]	[mm]	[mm]	[cm <sup>3</sup> ]	[kg/m]	
Material: S 235 JR							
1	70	2.5	21	6300	6.08	3.33	218 453 630
2	110	3.0	21	6300	15.96	5.00	218 443 630
		3.0	27	6300	15.79	5.16	218 445 630
		3.0	30	6300	15.74	5.25	218 452 630
3	160	3.0	27	7300	33.16	7.33	218 461 730
		4.0	27	7300	44.22	8.95	218 467 730
		4.0	40	7300	43.50	9.33	218 465 730

Bespoke dimensions, sand-blasted and weld-primed versions available on request

# Pillar profiles

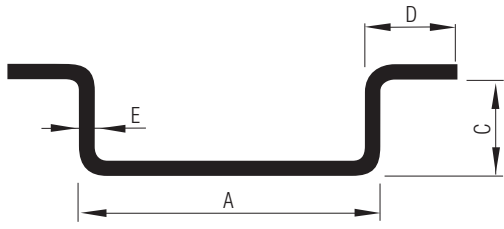


Figure 1

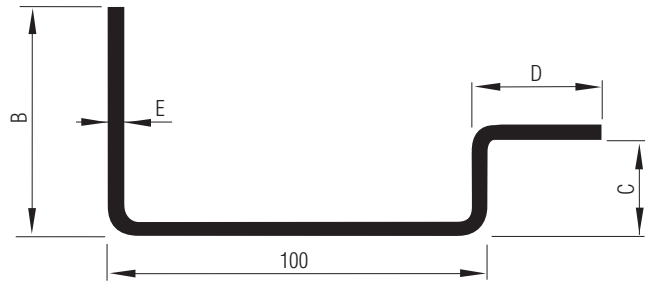


Figure 2

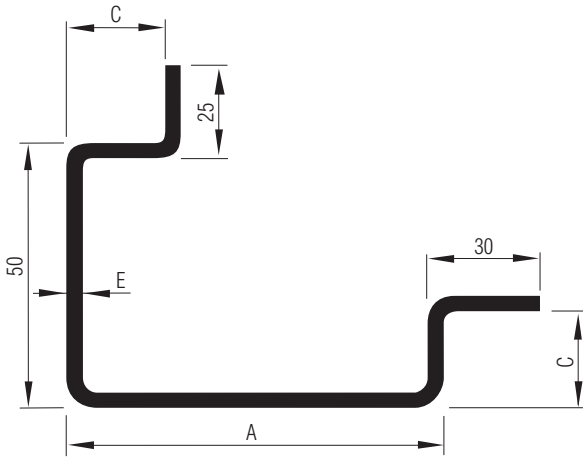


Figure 3

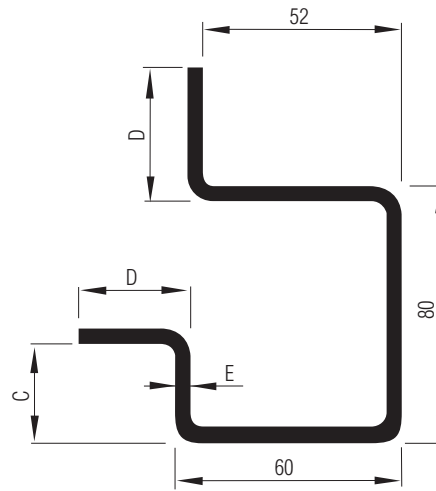


Figure 4



# Pillar profiles

## Pillar profiles

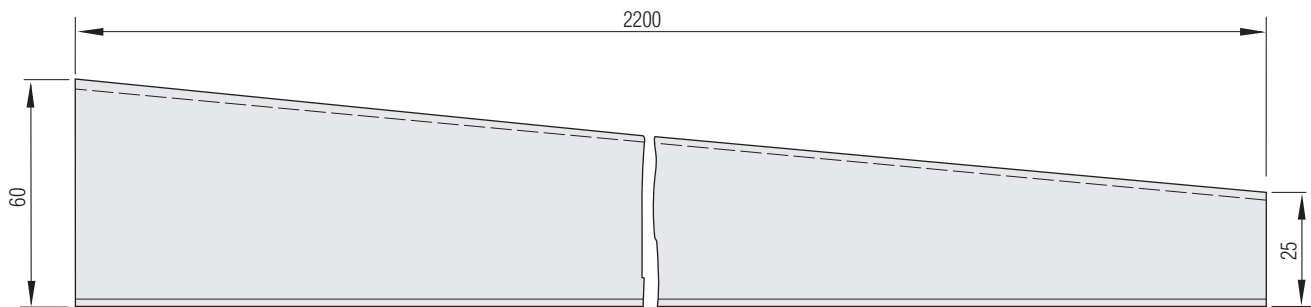
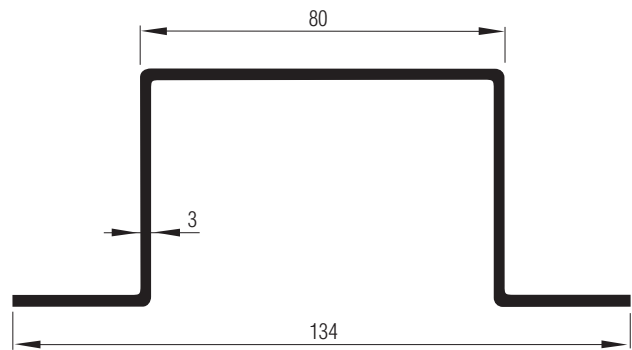
Material: S 235 JR

Figure	Profile width	Profile height	Stop depth	Stop length	Material thickness	Manufacturing length	Weight approx.	Article No.
[No.]	A [mm]	A [mm]	C [mm]	D [mm]	E [mm]	[mm]	[kg/m]	
1	80	32	28	28	4	4000	5.40	218 470 000
	100	36	31	30	5	6000	7.50	218 489 000
2	100	60	31	30	5	6000	7.75	218 477 600
3	80	50	28	30/25	5	4000	8.25	218 472 000
	100	50	31	30/25	5	4000	9.00	218 478 000
		50	31	30/25	4	6000	7.50	218 506 000
4	60	80	31	30/35	5	6000	10.00	218 481 600
		80	31	31/35	4	6000	8.25	218 507 000

Bespoke dimensions. sand-blasted and weld-primed versions available on request

## Bulkhead strut, cone-shaped

Length: 2200 mm  
 Material: S 235 JR  
 Weight: approx. 11.0 kg/each  
 Article No. 218 550 000

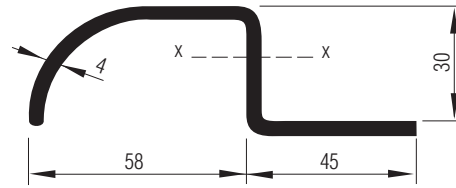


All technical specifications contained in this brochure are approximate and no guarantee is given as to their accuracy. Designs are subject to change.

## Floor frame profile with hole template for lashing straps

### Z-shaped tipper profile

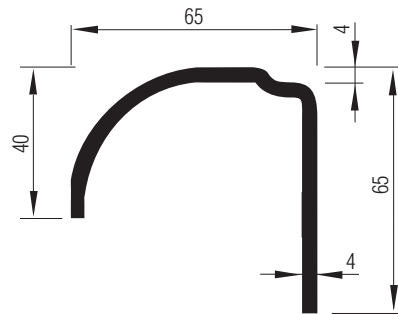
Floor recess	30 mm
Length:	6000 mm
Moment of resistance:	W <sub>x</sub> - 5.46 cm <sup>3</sup> W <sub>y</sub> - 8.95 cm <sup>3</sup>
Material:	S 235 JR
Weight:	approx. 4.42 kg/m
Article No.	218 379 000 - 4 mm



### Tipper profile

– With groove for sheet metal flooring, with rough rolled edges

Length:	6000 mm
Moment of resistance:	W <sub>x</sub> - 4.07 cm <sup>3</sup> W <sub>y</sub> - 7.52 cm <sup>3</sup>
Material:	S 235 JR
Weight:	approx. 4.30 kg/m
Article No.	218 392 000

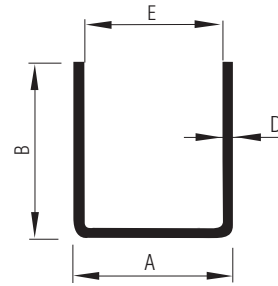


# Dropside channel iron, kick strips

## Dropside channel iron, galvanised

Length: 6000 mm  
 Profile thickness: 1.5 mm (measure D)  
 Material: St 37 - 2

Width A [mm]	Height B [mm]	Clearance width E [mm]	Weight approx. [kg/m]	Article No.
18	18	15	0.58	218 313 000
21	21	18	0.68	218 315 000
25	25	22	0.83	218 322 000

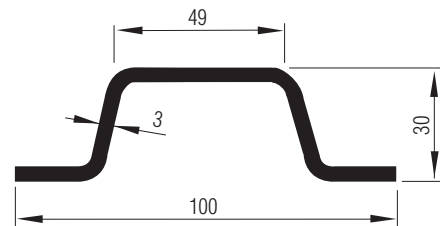


## Special profiles

### Special cap profile

- Suitable for stationary dropsides or as a hinge profile to accommodate the weld-in butt Article No. 231 900 000

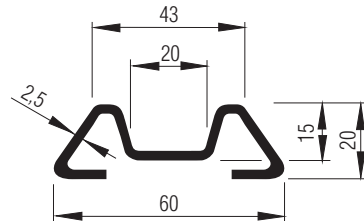
**Length:** 6000 mm  
**Material:** S 235 JR  
**Weight:** approx. 3.16 kg/m  
**Article No.** 218 543 000 – galvanised



### "M"-shaped profile

- For stationary dropsides (cattle trucks, etc.)

**Length:** 6000 mm  
**Material:** S 235 JR  
**Weight:** 218 539 - approx. 2.00 kg/m  
218 540 - approx. 2.00 kg/m  
**Article No.** 218 539 000 – untreated  
218 540 000 – galvanised



### Plastic end fitting

- End fitting for the above-mentioned M-shaped profile

**Material:** PUR PU-based integral foam  
**Colour:** black  
**Weight:** approx. 0.02 kg/each  
**Article No.** 233 358 000 – insertable

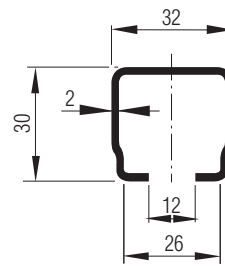


# Carriage combinations

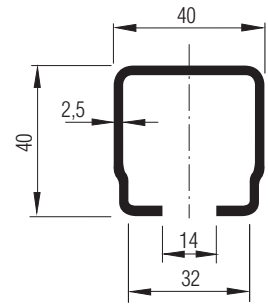
## C-shape track profile, galvanised

– Lower profile narrows to safely guide the carriage

<b>Length:</b>	6000 mm
<b>Moment of resistance:</b>	218 548 000 - $W_x$ - 1.45 cm <sup>3</sup> 501 340 000 - $W_x$ - 3.10 cm <sup>3</sup>
<b>Material:</b>	S 235 JR, galvanised
<b>Weight:</b>	218 548 000 - approx. 1.52 kg/m 501 340 000 - approx. 2.40 kg/m
<b>Article No.</b>	218 548 000 - 32 mm 501 340 000 - 40 mm



218 548 000

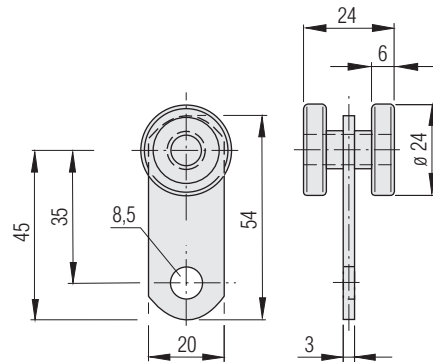


501 340 000

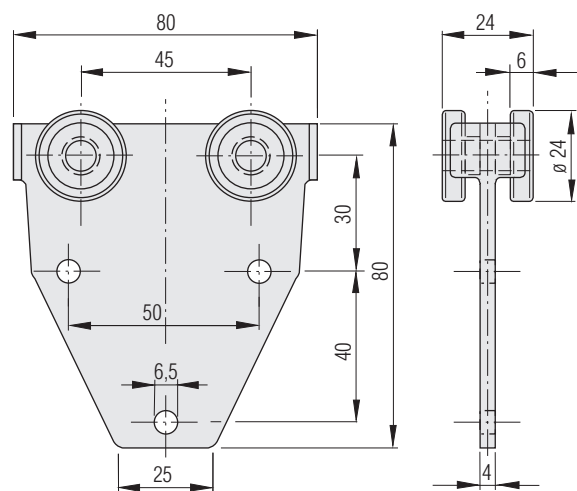
## Carriage

– For track Article No. 218 548 000 ball-bearing mounted, dustproof steel castors with locking lug

<b>Load-bearing capacity:</b>	232 954 000 - 55 N 232 955 000 - 250 N
<b>Material:</b>	galvanised steel
<b>Weight:</b>	232 954 000 - approx. 0.055 kg/each 232 955 000 - approx. 0.235 kg/each
<b>Article No.</b>	232 954 000 - single pair 232 955 000 - double pair



232 954 000



232 955 000

## Special profiles

### Carriage

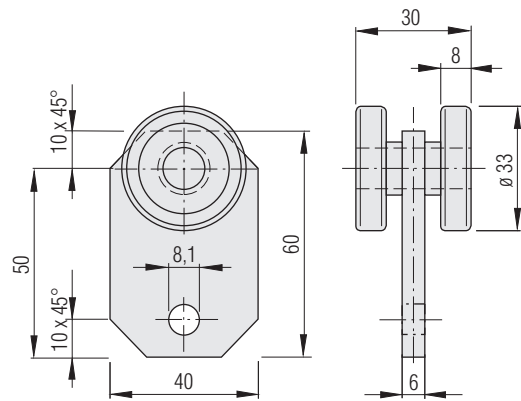
– For track Article No. 501 340 000 ball-bearing mounted, dustproof steel castors with locking lug

**Load capacity:** 631 915 000 - 178.6 N  
232 956 000 - 357.2 N

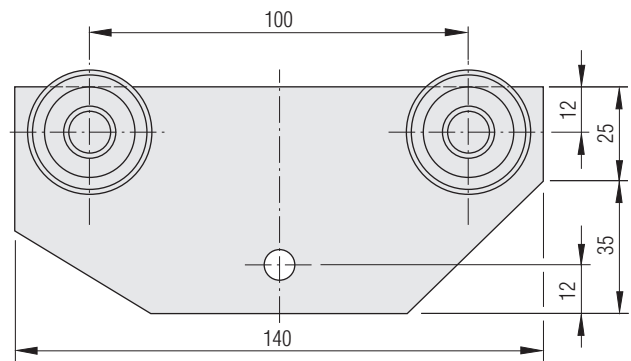
**Material:** galvanised steel

**Weight:** 631 915 000 - approx. 0.195 kg/each  
232 956 000 - approx. 0.250 kg/each

**Article No.** 631 915 000 - single pair  
232 956 000 - double pair



631 915 000



232 956 000

# Notes

A large grid area for taking notes, consisting of 20 columns and 30 rows of small squares.

All technical specifications contained in this brochure are approximate and no guarantee is given as to their accuracy. Designs are subject to change.

**Titgemeyer GmbH & Co. KG**

Hannoversche Straße 97  
49084 Osnabrück / DE

P.O. Box 4320  
49033 Osnabrück / DE

T +49 541 5822-0  
E [info@titgemeyer.com](mailto:info@titgemeyer.com)  
W [titgemeyer.com](http://titgemeyer.com)